

\$123,800 - Na, Edmonton

MLS® #E4417333

\$123,800

0 Bedroom, 0.00 Bathroom,
Business on 0.00 Acres

Killarney, Edmonton, AB

This WELL known business located in a busy strip mall. High traffic area. Serving REMEN, BUBBLE TEA.... Business is pretty steady with lots of take out and on line orders. Simple menu and easy to operate. It has great potential to add more items and increase the sales. Don't miss it !!



Essential Information

MLS® #	E4417333
Price	\$123,800
Bathrooms	0.00
Acres	0.00
Type	Business
Status	Active

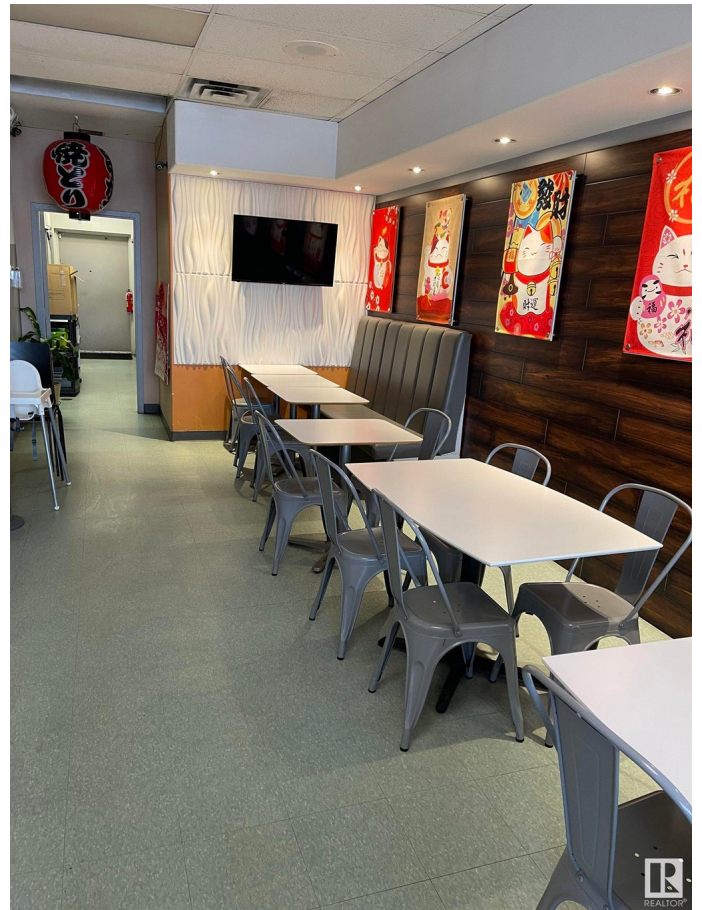
Community Information

Address	Na
Area	Edmonton
Subdivision	Killarney
City	Edmonton
County	ALBERTA
Province	AB
Postal Code	T5E 2T2

Additional Information

Date Listed	January 8th, 2025
-------------	-------------------

Days on Market 112
Zoning Zone 02



DATA IS DEEMED RELIABLE BUT IS NOT GUARANTEED ACCURATE BY THE REALTORS® ASSOCIATION OF EDMONTON. COPYRIGHT 2025 BY THE REALTORS® ASSOCIATION OF EDMONTON. ALL RIGHTS RESERVED. Trademarks are owned or controlled by the Canadian Real Estate Association (CREA) and identify real estate professionals who are members of CREA (REALTOR®, REALTORS®, and/or the quality of services they provide (MLS®, Multiple Listing Service®)
Listing information last updated on April 30th, 2025 at 10:47am MDT

