

## \$330,000 - N/A, Edmonton

MLS® #E4418296

**\$330,000**

0 Bedroom, 0.00 Bathroom,  
Business on 0.00 Acres

Ritchie, Edmonton, AB

**\*\*\*Prime Restaurant Business Opportunity in the Heart of Edmonton's Whyte Avenue\*\*\***

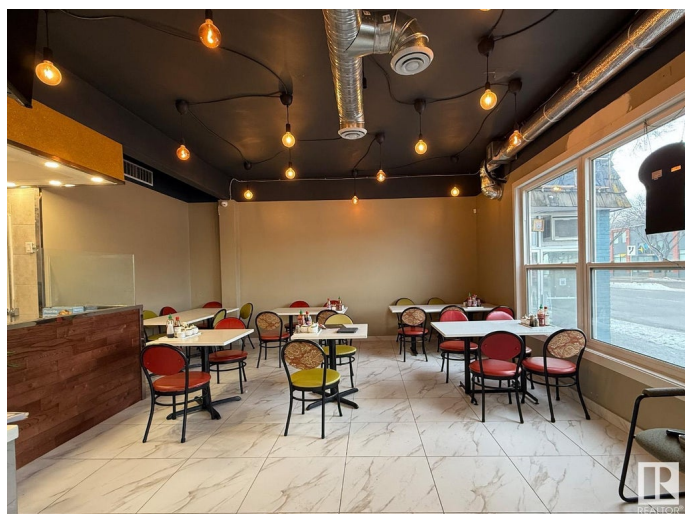
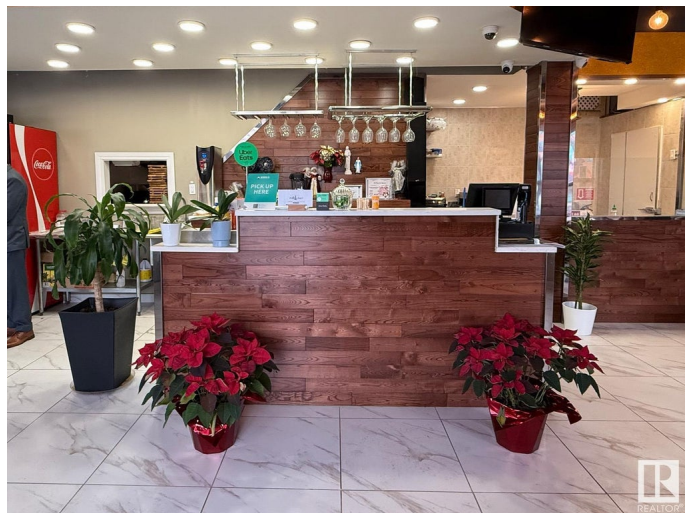
Located in one of Edmonton's most vibrant and sought-after areas, this turn-key restaurant presents an exceptional opportunity for both first-time business owners and those looking to expand their portfolio. With its prime location on Whyte Avenue, the possibilities are endless—whether you wish to continue its current concept or transform it into any cuisine or dining style of your choice. This is a rare chance to capitalize on a high-traffic area with immense potential for success.

### Essential Information

MLS® #	E4418296
Price	\$330,000
Bathrooms	0.00
Acres	0.00
Type	Business
Status	Active

### Community Information

Address	N/A
Area	Edmonton
Subdivision	Ritchie
City	Edmonton
County	ALBERTA



Province	AB
Postal Code	T6E 3Y8

### **Additional Information**

Date Listed	January 16th, 2025
Days on Market	104
Zoning	Zone 17

DATA IS DEEMED RELIABLE BUT IS NOT GUARANTEED ACCURATE BY THE REALTORS® ASSOCIATION OF EDMONTON. COPYRIGHT 2025 BY THE REALTORS® ASSOCIATION OF EDMONTON. ALL RIGHTS RESERVED. Trademarks are owned or controlled by the Canadian Real Estate Association (CREA) and identify real estate professionals who are members of CREA (REALTOR®, REALTORS®) and/or the quality of services they provide (MLS®, Multiple Listing Service®)

Listing information last updated on April 30th, 2025 at 7:17am MDT