

**\$719,000**

Prince Charles, Edmonton, AB

Prime location near major transit feeders  
Long-term tenants with stable income Turnkey  
investment with immediate rental income  
High-traffic area with excellent visibility

Built in 1954

## Essential Information

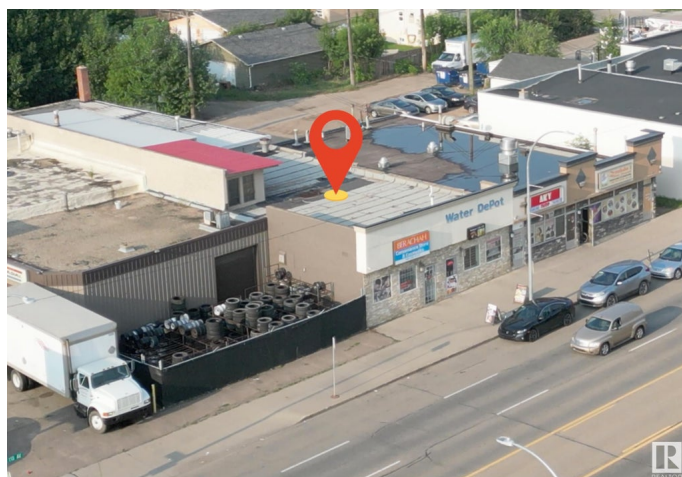
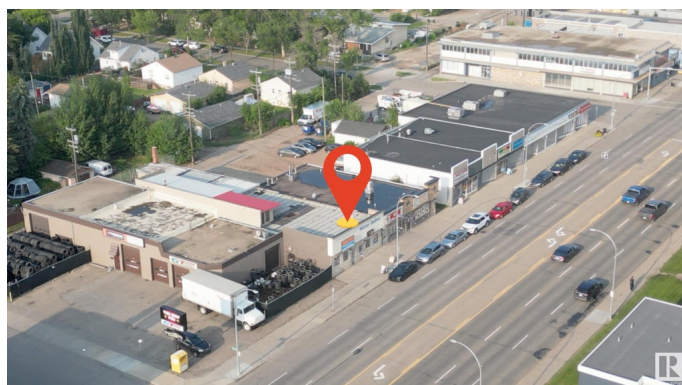
MLS® #	E4423081
Price	\$719,000
Bathrooms	0.00
Acres	0.00
Year Built	1954
Type	Business with Property
Status	Active

## Community Information

Address	12524 118 Avenue
Area	Edmonton
Subdivision	Prince Charles
City	Edmonton
County	ALBERTA
Province	AB
Postal Code	T5L 2K6

## Exterior

Exterior	Concrete, Stucco, Block
Roof	Flat Roof



Construction      Concrete, Stucco, Block

### **Additional Information**

Date Listed      February 27th, 2025

Days on Market      108

Zoning      Zone 04

DATA IS DEEMED RELIABLE BUT IS NOT GUARANTEED ACCURATE BY THE REALTORS® ASSOCIATION OF EDMONTON. COPYRIGHT 2025 BY THE REALTORS® ASSOCIATION OF EDMONTON. ALL RIGHTS RESERVED. Trademarks are owned or controlled by the Canadian Real Estate Association (CREA) and identify real estate professionals who are members of CREA (REALTOR®, REALTORS®) and/or the quality of services they provide (MLS®, Multiple Listing Service®)

Listing information last updated on June 14th, 2025 at 11:47pm MDT