

\$209,900 - Range Road 204 Township Road 552, Rural Strathcona County

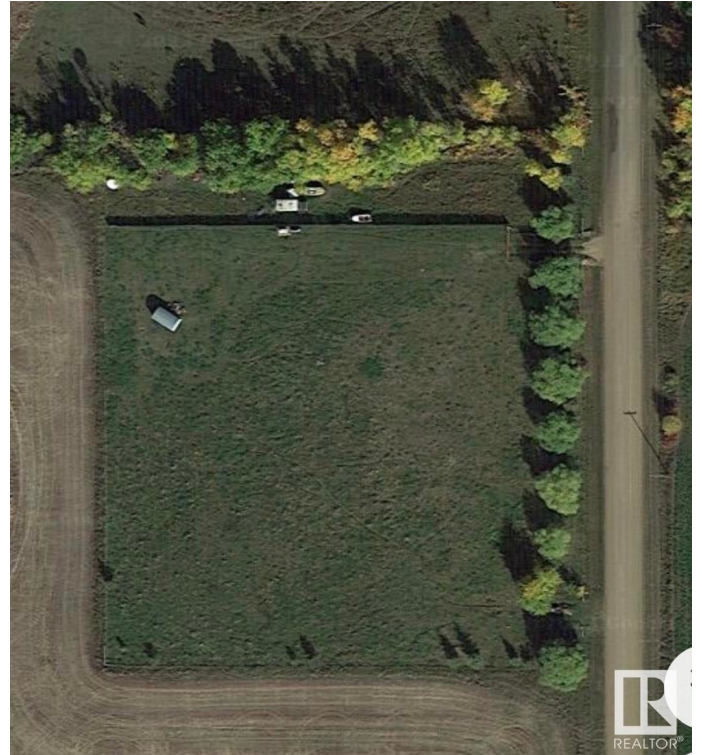
MLS® #E4423931

\$209,900

0 Bedroom, 0.00 Bathroom,
Rural on 3.26 Acres

None, Rural Strathcona County, AB

This 3.26 acres of land with a private setting and a view of Edmonton is ready to build your dream acreage. This property is fully fenced, cleared and is currently in grass and hay. There are 2 entrances onto the property off of RR204 and there is a fantastic building spot up on a hill that could accommodate a walkout basement. Power and Natural gas are at the property line and there is a municipal water line close by! Only a short 19 min drive to Fort Saskatchewan and 40 min to Edmonton.



Essential Information

MLS® #	E4423931
Price	\$209,900
Bathrooms	0.00
Acres	3.26
Type	Rural
Sub-Type	Vacant Lot/Land
Status	Active



Community Information

Address	Range Road 204 Township Road 552
Area	Rural Strathcona County
Subdivision	None
City	Rural Strathcona County

County	ALBERTA
Province	AB
Postal Code	T0B 0S0

Exterior

Exterior Features Fenced, Flat Site

Additional Information

Date Listed March 4th, 2025

Days on Market 59

Zoning Zone 60

DATA IS DEEMED RELIABLE BUT IS NOT GUARANTEED ACCURATE BY THE REALTORS® ASSOCIATION OF EDMONTON. COPYRIGHT 2025 BY THE REALTORS® ASSOCIATION OF EDMONTON. ALL RIGHTS RESERVED. Trademarks are owned or controlled by the Canadian Real Estate Association (CREA) and identify real estate professionals who are members of CREA (REALTOR®, REALTORS®) and/or the quality of services they provide (MLS®, Multiple Listing Service®)

Listing information last updated on May 1st, 2025 at 10:47pm MDT