

\$624,900 - 8358 Mayday Link, Edmonton

MLS® #E4424366

\$624,900

4 Bedroom, 3.50 Bathroom, 1,900 sqft

Single Family on 0.00 Acres

The Orchards At Ellerslie, Edmonton, AB

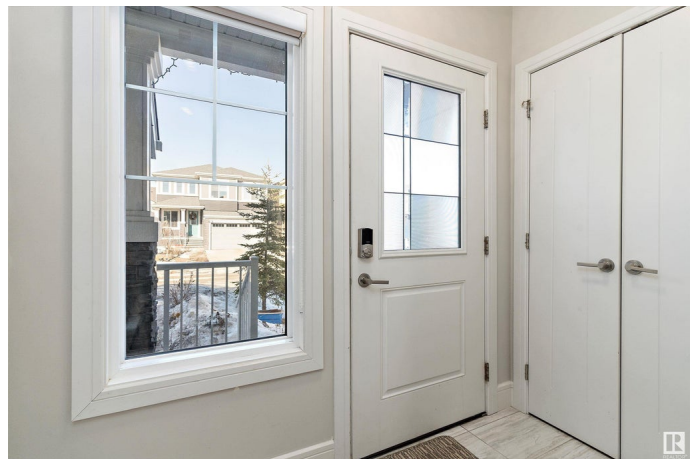
Welcome to this Exceptional well maintained 1900 sqft streetscape single family Home with SEPARATE SIDE ENTRY to FINISHED LEGAL IN-LAW SUITE BASEMENT offering luxury, comfort and investment potential in community of Orchards. Main floor boasts spacious living area with fireplace, feature wall and large windows for natural light. Kitchen is equipped with stainless steel appliances, gas cooktop, quartz counter top and spacious walk-in pantry in corner. Additional features include 9 feet ceiling, mudroom and half washroom. Upstairs features include 3 spacious bedroom, 2 full washrooms, bonus area and laundry. Master bedroom has walk in closet and 5 piece ensuite. MDF shelving through out the house. Fully FINISHED BASEMENT comes with 1 BEDROOM, SECOND KITCHEN, LIVING AREA, FULL WASHROOM AND SEPARATE LAUNDRY. House is fully landscaped, fenced, has spacious deck. House is FULLY AIR CONDITONED and close to school, parks, plaza and all amenities.

Built in 2018

Essential Information

MLS® # E4424366

Price \$624,900



Bedrooms	4
Bathrooms	3.50
Full Baths	3
Half Baths	1
Square Footage	1,900
Acres	0.00
Year Built	2018
Type	Single Family
Sub-Type	Detached Single Family
Style	2 Storey
Status	Active

Community Information

Address	8358 Mayday Link
Area	Edmonton
Subdivision	The Orchards At Ellerslie
City	Edmonton
County	ALBERTA
Province	AB
Postal Code	T6X 2L1

Amenities

Amenities	Air Conditioner, Ceiling 9 ft., Deck, Detectors Smoke, No Animal Home, No Smoking Home, See Remarks
Parking Spaces	4
Parking	Double Garage Attached

Interior

Interior Features	ensuite bathroom
Appliances	Air Conditioning-Central, Dishwasher-Built-In, Garage Control, Garage Opener, Hood Fan, Stove-Electric, Stove-Gas, Window Coverings, Dryer-Two, Refrigerators-Two, Washers-Two
Heating	Forced Air-1, Natural Gas
Fireplace	Yes
Fireplaces	Tile Surround
Stories	3
Has Suite	Yes
Has Basement	Yes
Basement	Full, Finished

Exterior

Exterior	Wood, Vinyl
Exterior Features	Airport Nearby, Fenced, Landscaped, No Back Lane, Playground Nearby, Public Transportation, Schools, Shopping Nearby
Roof	Asphalt Shingles
Construction	Wood, Vinyl
Foundation	Concrete Perimeter

Additional Information

Date Listed	March 6th, 2025
Days on Market	55
Zoning	Zone 53

DATA IS DEEMED RELIABLE BUT IS NOT GUARANTEED ACCURATE BY THE REALTORS® ASSOCIATION OF EDMONTON. COPYRIGHT 2025 BY THE REALTORS® ASSOCIATION OF EDMONTON. ALL RIGHTS RESERVED.Trademarks are owned or controlled by the Canadian Real Estate Association (CREA) and identify real estate professionals who are members of CREA (REALTOR®, REALTORS®) and/or the quality of services they provide (MLS®, Multiple Listing Service®)

Listing information last updated on April 30th, 2025 at 9:47am MDT