

\$109,900 - 702 10106 105 Street, Edmonton

MLS® #E4427408

\$109,900

1 Bedroom, 1.00 Bathroom, 995 sqft
Condo / Townhouse on 0.00 Acres

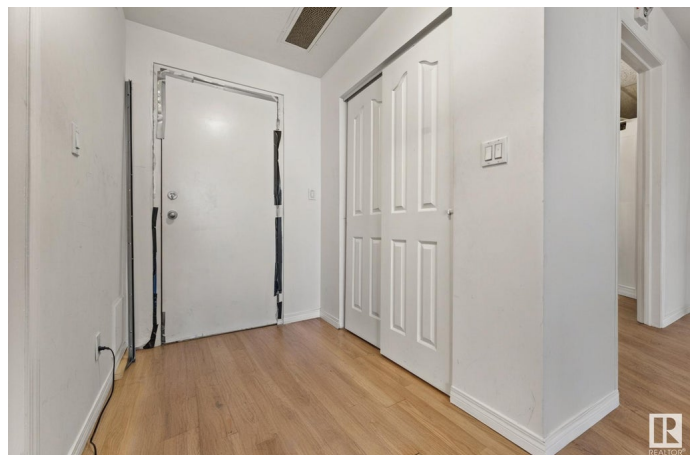
Downtown (Edmonton), Edmonton, AB

Welcome to this open-concept 7th floor 995 SF LOFT-STYLE condo right on JASPER AVE! Stepping into this unit you will notice the 10ft high ceilings and the open windows with DOWNTOWN VIEWS! This unit has a full kitchen with an island with lots of cupboard and counter top space. Your unit has a generous sized living room with east facing picture windows that brings in lots of natural light and of views of the downtown skyline. Your good sized bedroom is adjacent with large windows and a WALK-IN CLOSET. Beside the entrance is the full 4pc bathroom in the unit with a tub & shower. Lastly is the ENSUITE LAUNDRY with stackable washer/dryer and a storage room. Downstairs you have 1 TITLED HEATED PARKING STALL that comes with the unit for convenience. Location is everything here with mins from ROGERS PLACE, MACEWAN, THE RIVER VALLEY, DOWNTOWN RESTAURANTS, AND PUBLIC TRANSIT & 1 BLOCK AWAY FROM FUTURE LRT STOP.

Built in 1973

Essential Information

MLS® #	E4427408
Price	\$109,900
Bedrooms	1



Bathrooms	1.00
Full Baths	1
Square Footage	995
Acres	0.00
Year Built	1973
Type	Condo / Townhouse
Sub-Type	Apartment High Rise
Style	Single Level Apartment
Status	Active

Community Information

Address	702 10106 105 Street
Area	Edmonton
Subdivision	Downtown (Edmonton)
City	Edmonton
County	ALBERTA
Province	AB
Postal Code	T5J 5E7

Amenities

Amenities	Off Street Parking, Security Door
Parking Spaces	1
Parking	Heated, Parkade, Underground

Interior

Appliances	Dishwasher-Built-In, Dryer, Refrigerator, Stove-Electric, Washer
Heating	Baseboard, Hot Water, Water
# of Stories	11
Stories	1
Has Basement	Yes
Basement	None, No Basement

Exterior

Exterior	Concrete
Exterior Features	Corner Lot, Flat Site, Schools, Shopping Nearby, View City, View Downtown
Roof	SBS Roofing System
Construction	Concrete
Foundation	Concrete Perimeter

School Information

Elementary	Garneau School
Middle	McKernan School
High	Allendale School

Additional Information

Date Listed	March 25th, 2025
Days on Market	36
Zoning	Zone 12
Condo Fee	\$737

DATA IS DEEMED RELIABLE BUT IS NOT GUARANTEED ACCURATE BY THE REALTORS® ASSOCIATION OF EDMONTON. COPYRIGHT 2025 BY THE REALTORS® ASSOCIATION OF EDMONTON. ALL RIGHTS RESERVED.Trademarks are owned or controlled by the Canadian Real Estate Association (CREA) and identify real estate professionals who are members of CREA (REALTOR®, REALTORS®) and/or the quality of services they provide (MLS®, Multiple Listing Service®)

Listing information last updated on April 30th, 2025 at 5:02pm MDT