

Courtesy Of Vic S Mutti And Dev Devgun Of MaxWell Polaris

\$770,000 - 3325 Chickadee Dr, Edmonton

MLS® #E4429197

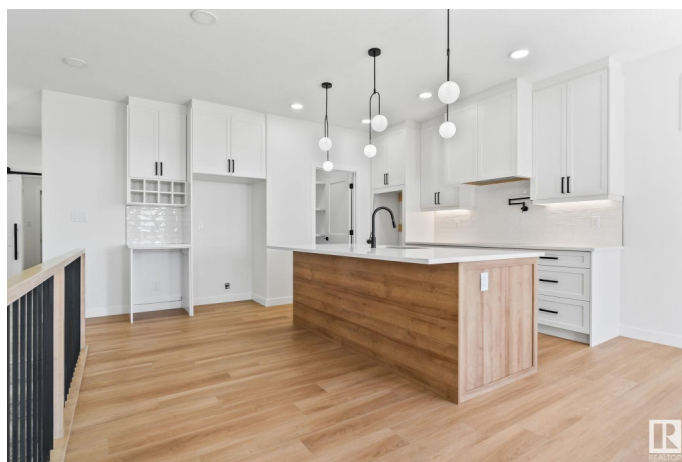
\$770,000

4 Bedroom, 3.00 Bathroom, 1,376 sqft

Single Family on 0.00 Acres

Starling, Edmonton, AB

1376 sq ft Walkout Bungalow, Possession Nov. 2025. Upon entering this charming WALKOUT bungalow, you step into a welcoming foyer that leads directly into the heart of the home. Include a total of 2 beds on main +2 in basement. The open-concept layout combines the living room, dining area, and kitchen, creating a spacious and inviting communal area and 2 bedrooms. Large windows grace the walls, allowing natural light to flood the space and offering picturesque view of the pond. The primary bedroom suite exudes tranquility, with its spacious layout, walk-in closet, and an ensuite bathroom complete with a luxurious soaking tub, separate shower, and dual vanity. This thoughtfully designed bungalow floor plan combines functionality with comfort, offering a cozy and inviting retreat for its occupants. The basement includes 2 beds, full bathroom, bar and living area. Photos are from previous home and used for showcasing the finishing. SPEC home is available in the area for viewing, similar model.



Built in 2025

Essential Information

MLS® # E4429197

Price \$770,000

Bedrooms	4
Bathrooms	3.00
Full Baths	3
Square Footage	1,376
Acres	0.00
Year Built	2025
Type	Single Family
Sub-Type	Detached Single Family
Style	Bungalow
Status	Active

Community Information

Address	3325 Chickadee Dr
Area	Edmonton
Subdivision	Starling
City	Edmonton
County	ALBERTA
Province	AB
Postal Code	T5S 0V6

Amenities

Amenities	Carbon Monoxide Detectors, Ceiling 9 ft., Exterior Walls- 2"x6", Hot Water Electric, No Animal Home, Walkout Basement, 9 ft. Basement Ceiling
Parking Spaces	4
Parking	Double Garage Attached

Interior

Interior Features	ensuite bathroom
Appliances	Builder Appliance Credit
Heating	Forced Air-1, Natural Gas
Fireplace	Yes
Fireplaces	Heatilator/Fan
Stories	2
Has Basement	Yes
Basement	Full, Finished

Exterior

Exterior	Wood, Stone, Vinyl, Hardie Board Siding
----------	---

Exterior Features	See Remarks
Roof	Asphalt Shingles
Construction	Wood, Stone, Vinyl, Hardie Board Siding
Foundation	Concrete Perimeter

Additional Information

Date Listed	April 3rd, 2025
Days on Market	120
Zoning	Zone 59

DATA IS DEEMED RELIABLE BUT IS NOT GUARANTEED ACCURATE BY THE REALTORS® ASSOCIATION OF EDMONTON. COPYRIGHT 2025 BY THE REALTORS® ASSOCIATION OF EDMONTON. ALL RIGHTS RESERVED.Trademarks are owned or controlled by the Canadian Real Estate Association (CREA) and identify real estate professionals who are members of CREA (REALTOR®, REALTORS®) and/or the quality of services they provide (MLS®, Multiple Listing Service®)

Listing information last updated on August 1st, 2025 at 3:32am MDT