

# \$670,000 - 14540 115 Avenue, Edmonton

MLS® #E4431253

**\$670,000**

0 Bedroom, 0.00 Bathroom,  
Industrial on 0.00 Acres

Huff Bremner Estate Industrial, Edmonton, AB

2,772 SF industrial condo with rear fenced yard available for owner/user or investment. Front of the bay has reception, one office and a lunchroom. Warehouse is open with sump and 16' tall overhead door. Great location with easy access to 149 Street and Yellowhead Trail.

Built in 1964

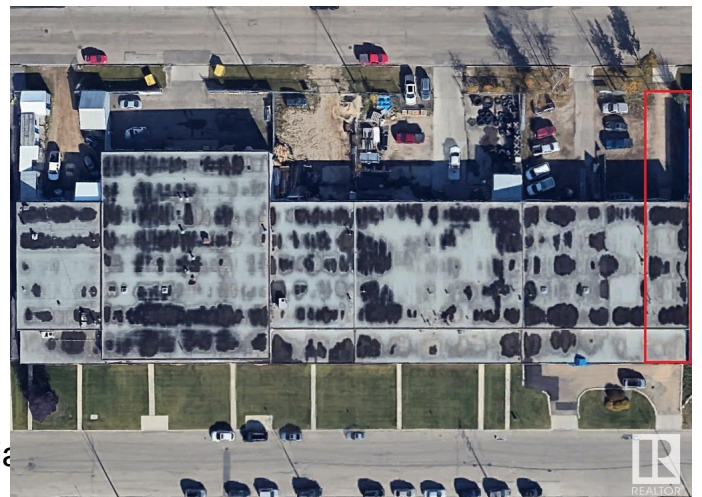
## Essential Information

MLS® #	E4431253
Price	\$670,000
Bathrooms	0.00
Acres	0.00
Year Built	1964
Type	Industrial
Status	Active

## Community Information

Address	14540 115 Avenue
Area	Edmonton
Subdivision	Huff Bremner Estate Industrial
City	Edmonton
County	ALBERTA
Province	AB
Postal Code	T5M 3B9

## Exterior



Exterior               Block  
Construction       Block

### **Additional Information**

Date Listed           April 14th, 2025  
Days on Market     117  
Zoning                Zone 40

DATA IS DEEMED RELIABLE BUT IS NOT GUARANTEED ACCURATE BY THE REALTORS® ASSOCIATION OF EDMONTON. COPYRIGHT 2025 BY THE REALTORS® ASSOCIATION OF EDMONTON. ALL RIGHTS RESERVED. Trademarks are owned or controlled by the Canadian Real Estate Association (CREA) and identify real estate professionals who are members of CREA (REALTOR®, REALTORS®) and/or the quality of services they provide (MLS®, Multiple Listing Service®)

Listing information last updated on August 9th, 2025 at 8:32am MDT