

Courtesy Of Michael Medos Of Sweetly

\$450,000 - 12843 204 Street, Edmonton

MLS® #E4433040

\$450,000

3 Bedroom, 2.50 Bathroom, 1,390 sqft

Single Family on 0.00 Acres

Trumpeter Area, Edmonton, AB

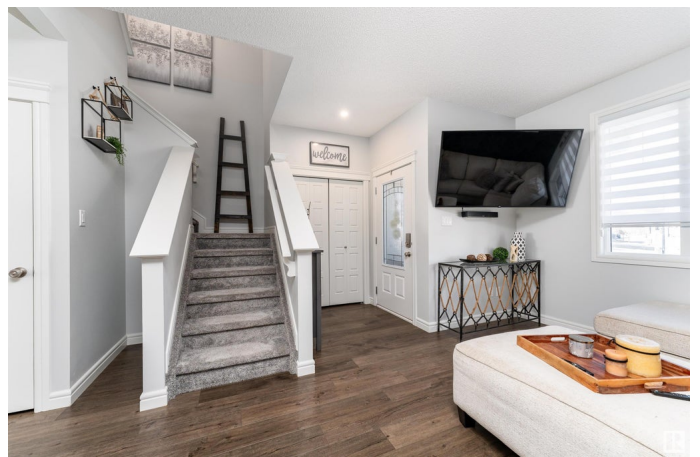
NO CONDO FEES! Welcome to this beautifully maintained 2-storey end unit in the vibrant community of Trumpeter. Offering 1,390 sq. ft. of comfortable living space, this 3 bedroom, 2.5 bathroom home is perfect for families, professionals, or anyone looking for a stylish and functional space to call home. The main floor features a bright, open-concept layout with a spacious living and dining area, and a modern kitchen complete with quartz countertops, a central island with seating, upgraded stainless steel appliances and an abundance of cabinet space. A convenient 2-pc bath and laundry rounds out the main level. Upstairs, youâ€™ll find three well-sized bedrooms and two full bathrooms, including a primary suite with a 4-pc ensuite and walk-in closet. The unfinished basement is ready for your personal touch. Enjoy the fully fenced backyard with a huge deckâ€”great for entertainingâ€”and a double detached garage. Located near parks, playgrounds, and with quick access to the Henday, this home has it all!

Built in 2020

Essential Information

MLS® # E4433040

Price \$450,000



Bedrooms	3
Bathrooms	2.50
Full Baths	2
Half Baths	1
Square Footage	1,390
Acres	0.00
Year Built	2020
Type	Single Family
Sub-Type	Residential Attached
Style	2 Storey
Status	Active

Community Information

Address	12843 204 Street
Area	Edmonton
Subdivision	Trumpeter Area
City	Edmonton
County	ALBERTA
Province	AB
Postal Code	T5S 0G1

Amenities

Amenities	Deck, See Remarks
Parking	Double Garage Detached

Interior

Interior Features	ensuite bathroom
Appliances	Dishwasher-Built-In, Dryer, Garage Control, Garage Opener, Refrigerator, Stove-Electric, Washer
Heating	Forced Air-1, Natural Gas
Stories	2
Has Basement	Yes
Basement	Full, Unfinished

Exterior

Exterior	Wood, Vinyl
Exterior Features	Back Lane, Corner Lot, Fenced, Golf Nearby, Park/Reserve, Playground Nearby
Roof	Asphalt Shingles

Construction	Wood, Vinyl
Foundation	Concrete Perimeter

Additional Information

Date Listed	April 26th, 2025
Days on Market	4
Zoning	Zone 59

DATA IS DEEMED RELIABLE BUT IS NOT GUARANTEED ACCURATE BY THE REALTORS® ASSOCIATION OF EDMONTON. COPYRIGHT 2025 BY THE REALTORS® ASSOCIATION OF EDMONTON. ALL RIGHTS RESERVED.Trademarks are owned or controlled by the Canadian Real Estate Association (CREA) and identify real estate professionals who are members of CREA (REALTOR®, REALTORS®) and/or the quality of services they provide (MLS®, Multiple Listing Service®)

Listing information last updated on April 30th, 2025 at 5:02pm MDT