

**\$587,895 - 408 27 Street, Edmonton**

MLS® #E4434616

**\$587,895**

4 Bedroom, 3.00 Bathroom, 1,887 sqft  
Single Family on 0.00 Acres

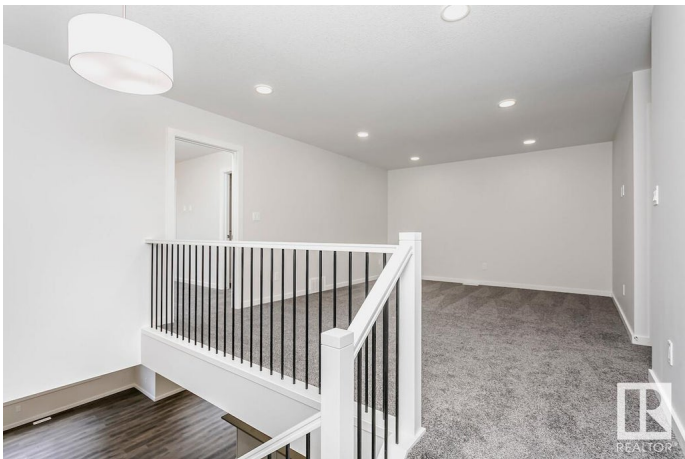
Alces, Edmonton, AB

The Stella is a spacious single family home with double front attached garage home, 9â€™ ceilings on the mMain floor bedroom and full bathroom featuring a stand-up shower with tiled walls for your short/long term visitorâ€™s convenience. The kitchen overlooks the great room with a 50â€• linear fireplace, dining area, and features quartz counters with extensive cabinet space. Spacious walk-through pantry which leads to the mudroom. A side entrance is included for future development. Basement ceiling height upgraded to 9â€™, for a more spacious feel, and 3-piece rough-in for future bathroom. Metal spindle railing on the main and second floor. The primary ensuite has dual sinks in the vanity and a 5â€™ stand up shower with tiled walls. Upstairs you will find a central bonus room, 3 bedrooms, laundry, and linen closet. Photos are representative.

Built in 2025

**Essential Information**

|                |           |
|----------------|-----------|
| MLS® #         | E4434616  |
| Price          | \$587,895 |
| Bedrooms       | 4         |
| Bathrooms      | 3.00      |
| Full Baths     | 3         |
| Square Footage | 1,887     |



|            |                        |
|------------|------------------------|
| Acres      | 0.00                   |
| Year Built | 2025                   |
| Type       | Single Family          |
| Sub-Type   | Detached Single Family |
| Style      | 2 Storey               |
| Status     | Active                 |

### **Community Information**

|             |               |
|-------------|---------------|
| Address     | 408 27 Street |
| Area        | Edmonton      |
| Subdivision | Alces         |
| City        | Edmonton      |
| County      | ALBERTA       |
| Province    | AB            |
| Postal Code | T6X 3H9       |

### **Amenities**

|                |                                |
|----------------|--------------------------------|
| Amenities      | Closet Organizers, See Remarks |
| Parking Spaces | 4                              |
| Parking        | Double Garage Attached         |

### **Interior**

|                   |                           |
|-------------------|---------------------------|
| Interior Features | ensuite bathroom          |
| Appliances        | None                      |
| Heating           | Forced Air-1, Natural Gas |
| Fireplace         | Yes                       |
| Fireplaces        | Insert                    |
| Stories           | 2                         |
| Has Basement      | Yes                       |
| Basement          | Full, Unfinished          |

### **Exterior**

|                   |  |
|-------------------|--|
| Exterior          | Wood, Vinyl                                      |
| Exterior Features | Park/Reserve, Playground Nearby, Shopping Nearby |
| Roof              | Asphalt Shingles                                 |
| Construction      | Wood, Vinyl                                      |
| Foundation        | Concrete Perimeter                               |

### **Additional Information**

Date Listed May 5th, 2025

Days on Market 42

Zoning Zone 53

DATA IS DEEMED RELIABLE BUT IS NOT GUARANTEED ACCURATE BY THE REALTORS® ASSOCIATION OF EDMONTON. COPYRIGHT 2025 BY THE REALTORS® ASSOCIATION OF EDMONTON. ALL RIGHTS RESERVED. Trademarks are owned or controlled by the Canadian Real Estate Association (CREA) and identify real estate professionals who are members of CREA (REALTOR®, REALTORS®) and/or the quality of services they provide (MLS®, Multiple Listing Service®)

Listing information last updated on June 16th, 2025 at 1:32pm MDT