

## \$219,900 - 407 15499 Castle Downs Road, Edmonton

MLS® #E4434685

**\$219,900**

1 Bedroom, 2.00 Bathroom, 1,200 sqft  
Condo / Townhouse on 0.00 Acres

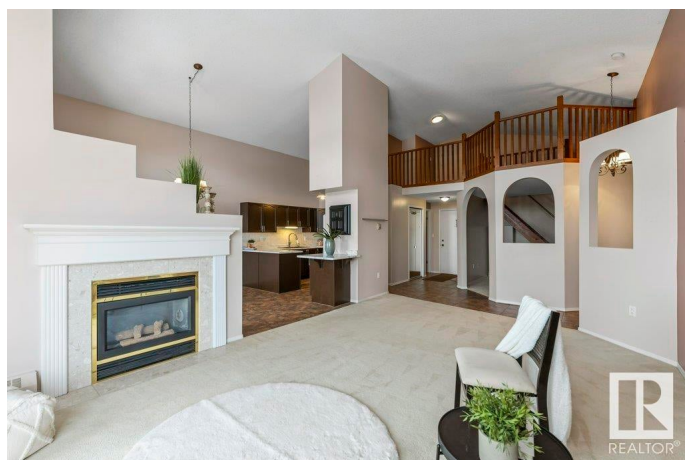
Beaumaris, Edmonton, AB

Experience the Best of Condo Living! Step into this beautifully maintained 1-bedroom plus den condo, where natural light floods the space, creating a warm atmosphere that truly feels like home. Soaring vaulted ceilings welcome you into the open-concept living area, complete with a cozy fireplace—perfect for relaxing evenings. The spacious kitchen offers ample counter space, ideal for entertaining guests or preparing your favorite meals. A generously sized office leads to a versatile loft area, perfect for hosting overnight guests or creating a cozy retreat overlooking the main living room. The oversized primary bedroom is a sanctuary, featuring a private 3-piece ensuite for your comfort. Step outside onto your new balcony and take in the partial lake views—an ideal spot for morning coffee or unwinding after a long day. As a resident, you™ also enjoy access to fantastic amenities, including a fully equipped exercise room and a refreshing pool, adding to the luxury and convenience of your new home!

Built in 1992

### Essential Information

MLS® #	E4434685
Price	\$219,900
Bedrooms	1



Bathrooms	2.00
Full Baths	2
Square Footage	1,200
Acres	0.00
Year Built	1992
Type	Condo / Townhouse
Sub-Type	Lowrise Apartment
Style	Single Level Apartment
Status	Active

### Community Information

Address	407 15499 Castle Downs Road
Area	Edmonton
Subdivision	Beaumaris
City	Edmonton
County	ALBERTA
Province	AB
Postal Code	T5X 5Y3

### Amenities

Amenities	Exercise Room, Party Room, Sauna; Swirlpool; Steam, Vaulted Ceiling
Parking	Stall
Is Waterfront	Yes

### Interior

Interior Features	ensuite bathroom
Appliances	Dishwasher-Built-In, Dryer, Hood Fan, Refrigerator, Stove-Electric, Washer, Window Coverings, See Remarks
Heating	Hot Water, Natural Gas
# of Stories	4
Stories	1
Has Basement	Yes
Basement	None, No Basement

### Exterior

Exterior	Wood, Stucco
Exterior Features	Backs Onto Lake, Low Maintenance Landscape, Playground Nearby, Public Swimming Pool, Public Transportation, Shopping Nearby, View Lake

Roof	Asphalt Shingles
Construction	Wood, Stucco
Foundation	Concrete Perimeter

### **Additional Information**

Date Listed	May 6th, 2025
Days on Market	41
Zoning	Zone 27
Condo Fee	\$624

DATA IS DEEMED RELIABLE BUT IS NOT GUARANTEED ACCURATE BY THE REALTORS® ASSOCIATION OF EDMONTON. COPYRIGHT 2025 BY THE REALTORS® ASSOCIATION OF EDMONTON. ALL RIGHTS RESERVED. Trademarks are owned or controlled by the Canadian Real Estate Association (CREA) and identify real estate professionals who are members of CREA (REALTOR®, REALTORS®) and/or the quality of services they provide (MLS®, Multiple Listing Service®)

Listing information last updated on June 16th, 2025 at 6:02pm MDT