

\$489,900 - 576 Glenridding Ravine Drive, Edmonton

MLS® #E4438544

\$489,900

3 Bedroom, 2.50 Bathroom, 1,428 sqft

Single Family on 0.00 Acres

Glenridding Ravine, Edmonton, AB

Former Showhome by Studio Homes! Welcome to The Edge in Ridgcrest at Glenridding Ravine—one of Edmonton's most vibrant communities. This area offers an ideal lifestyle for young couples, growing families & savvy investors. This 1,427 sq ft home showcases modern elegance throughout, featuring quartz countertops in every space, chef's kitchen w pantry, 36" upper cabinets, ceiling drop detail over the island & stylish half bath on main floor. Soaring 9' ceilings & luxury vinyl plank flooring lead into an open-concept dining & living room w natural light from oversized windows. Sleek wall-mounted electric fireplace adds warmth & style. Upstairs a spacious primary suite w walk-in closet, private ensuite & custom wood feature wall. 2 additional bedrooms, full bathroom, bright loft space & upstairs laundry. Custom wood shelving w integrated LED lighting throughout the home. Enjoy warm summer evenings on your charming covered veranda.

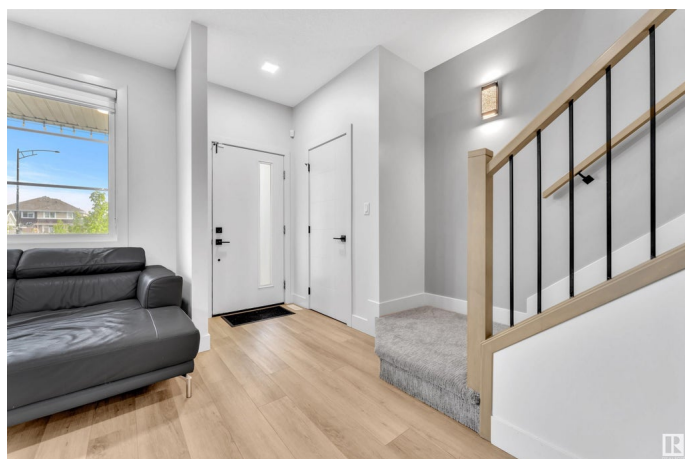
Built in 2020

Essential Information

MLS® # E4438544

Price \$489,900

Bedrooms 3



Bathrooms	2.50
Full Baths	2
Half Baths	1
Square Footage	1,428
Acres	0.00
Year Built	2020
Type	Single Family
Sub-Type	Detached Single Family
Style	2 Storey
Status	Active

Community Information

Address	576 Glenridding Ravine Drive
Area	Edmonton
Subdivision	Glenridding Ravine
City	Edmonton
County	ALBERTA
Province	AB
Postal Code	T6W 4P1

Amenities

Amenities	Ceiling 9 ft., Deck
Parking Spaces	2
Parking	Double Garage Detached

Interior

Interior Features	ensuite bathroom
Appliances	Dishwasher-Built-In, Hood Fan, Oven-Microwave, Refrigerator, Stacked Washer/Dryer, Stove-Electric
Heating	Forced Air-1, Natural Gas
Stories	2
Has Basement	Yes
Basement	Full, Unfinished

Exterior

Exterior	Wood, Stone, Vinyl
Exterior Features	Public Transportation, Shopping Nearby
Roof	Asphalt Shingles
Construction	Wood, Stone, Vinyl

Foundation Concrete Perimeter

Additional Information

Date Listed May 26th, 2025
Days on Market 21
Zoning Zone 56
HOA Fees 250
HOA Fees Freq. Annually

DATA IS DEEMED RELIABLE BUT IS NOT GUARANTEED ACCURATE BY THE REALTORS® ASSOCIATION OF EDMONTON. COPYRIGHT 2025 BY THE REALTORS® ASSOCIATION OF EDMONTON. ALL RIGHTS RESERVED.Trademarks are owned or controlled by the Canadian Real Estate Association (CREA) and identify real estate professionals who are members of CREA (REALTOR®, REALTORS®) and/or the quality of services they provide (MLS®, Multiple Listing Service®)
Listing information last updated on June 16th, 2025 at 6:17pm MDT