

\$224,900 - 52 2505 42 Street, Edmonton

MLS® #E4439250

\$224,900

2 Bedroom, 1.50 Bathroom, 1,133 sqft

Condo / Townhouse on 0.00 Acres

Bisset, Edmonton, AB

EXCELLENT STARTER HOME!!! Newer large 2 story home nice LAYOUT, LARGE, FUNCTIONAL KITCHEN, open floor plan, large windows, GAS FIREPLACE, LARGE BEDROOMS, IN SUITE LAUNDRY, VERY GOOD LOCATION, 1 1/2 bathrooms, close to schools, bus stop, SHOPPING, PARKS, patio door off dining room, balcony. Come make this your home.

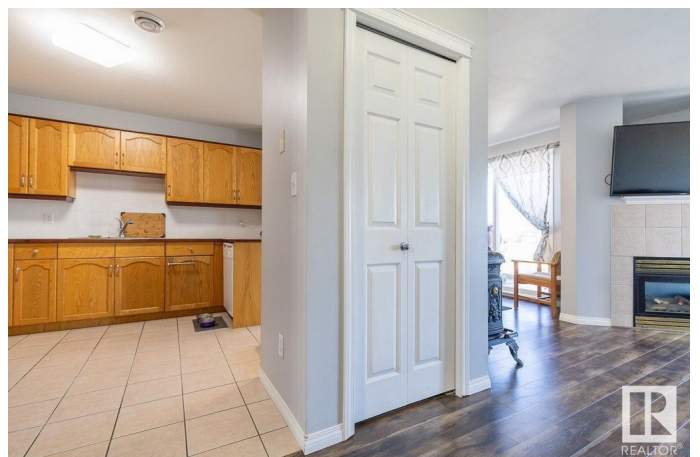
Built in 2002

Essential Information

MLS® #	E4439250
Price	\$224,900
Bedrooms	2
Bathrooms	1.50
Full Baths	1
Half Baths	1
Square Footage	1,133
Acres	0.00
Year Built	2002
Type	Condo / Townhouse
Sub-Type	Townhouse
Style	2 Storey
Status	Active

Community Information

Address 52 2505 42 Street



Area	Edmonton
Subdivision	Bisset
City	Edmonton
County	ALBERTA
Province	AB
Postal Code	T6L 7G8

Amenities

Amenities	Off Street Parking, On Street Parking, No Smoking Home
Parking	Stall

Interior

Appliances	Dishwasher-Built-In, Dryer, Refrigerator, Stove-Electric, Washer, Window Coverings
Heating	Forced Air-1, Natural Gas
Fireplace	Yes
Fireplaces	Glass Door
Stories	3
Has Basement	Yes
Basement	None, No Basement

Exterior

Exterior	Wood, Vinyl
Exterior Features	Landscaped, Playground Nearby, See Remarks
Roof	Asphalt Shingles
Construction	Wood, Vinyl
Foundation	Concrete Perimeter

Additional Information

Date Listed	May 28th, 2025
Days on Market	20
Zoning	Zone 29
Condo Fee	\$192

DATA IS DEEMED RELIABLE BUT IS NOT GUARANTEED ACCURATE BY THE REALTORS® ASSOCIATION OF EDMONTON. COPYRIGHT 2025 BY THE REALTORS® ASSOCIATION OF EDMONTON. ALL RIGHTS RESERVED. Trademarks are owned or controlled by the Canadian Real Estate Association (CREA) and identify real estate professionals who are members of CREA (REALTOR®, REALTORS®) and/or the quality of services they provide (MLS®, Multiple Listing Service®)

Listing information last updated on June 17th, 2025 at 3:47pm MDT