

\$699,800 - 8 Norris Crescent, St. Albert

MLS® #E4440495

\$699,800

4 Bedroom, 3.50 Bathroom, 2,253 sqft

Single Family on 0.00 Acres

North Ridge, St. Albert, AB

Welcome to this perfect family home in the heart of North Ridge, a warm, family-oriented community surrounded by parks and schools. Situated on a quiet crescent with a huge, private south-facing yard, you'll love the mature trees, large garden, composite deck, shed, motorized awning, and charming front porch. Step inside to beautiful hardwood flooring and a spacious entrance. The kitchen is filled with stainless steel appliances, granite countertops, and an extra-large walk-through pantry, and it flows seamlessly into a bright living room and oversized dining space with vaulted ceilings. Large south-facing windows fill the main floor with sunlight all day long. Upstairs offers a large bonus room, two well-sized kids' bedrooms, and a spacious primary suite with ensuite, perfectly laid out for family living. Extras include surround sound, A/C, water softener, exterior lighting, an oversized garage with drain and hot/cold taps, gas bqq hookup, hot tub rough-in & more. This home truly has it all!

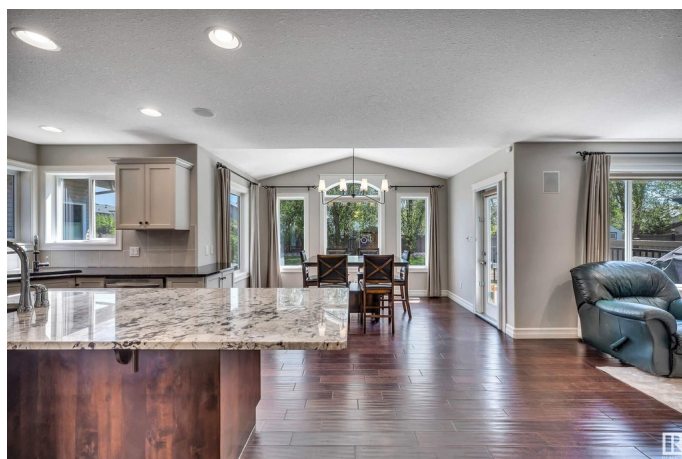
Built in 2005

Essential Information

MLS® # E4440495

Price \$699,800

Bedrooms 4



Bathrooms	3.50
Full Baths	3
Half Baths	1
Square Footage	2,253
Acres	0.00
Year Built	2005
Type	Single Family
Sub-Type	Detached Single Family
Style	2 Storey
Status	Active

Community Information

Address	8 Norris Crescent
Area	St. Albert
Subdivision	North Ridge
City	St. Albert
County	ALBERTA
Province	AB
Postal Code	T8N 7M1

Amenities

Amenities	Air Conditioner, Deck, Detectors Smoke, Front Porch, No Smoking Home
Parking	Double Garage Attached, Over Sized

Interior

Interior Features	ensuite bathroom
Appliances	Air Conditioning-Central, Dryer, Hood Fan, Refrigerator, Stove-Electric, Washer, Window Coverings
Heating	Forced Air-1, Natural Gas
Fireplace	Yes
Fireplaces	Double Sided
Stories	3
Has Basement	Yes
Basement	Full, Finished

Exterior

Exterior	Wood, Stone, Vinyl
Exterior Features	Fenced, Fruit Trees/Shrubs, Golf Nearby, Landscaped, Low

Maintenance Landscape, Playground Nearby, Schools, Shopping
Nearby

Roof Asphalt Shingles
Construction Wood, Stone, Vinyl
Foundation Concrete Perimeter

School Information

Elementary Muriel Martin Elementary
Middle Sister Alphonse Academy
High St. Albert Catholic

Additional Information

Date Listed June 5th, 2025
Days on Market 11
Zoning Zone 24

DATA IS DEEMED RELIABLE BUT IS NOT GUARANTEED ACCURATE BY THE REALTORS® ASSOCIATION OF EDMONTON. COPYRIGHT 2025 BY THE REALTORS® ASSOCIATION OF EDMONTON. ALL RIGHTS RESERVED.Trademarks are owned or controlled by the Canadian Real Estate Association (CREA) and identify real estate professionals who are members of CREA (REALTOR®, REALTORS®) and/or the quality of services they provide (MLS®, Multiple Listing Service®)

Listing information last updated on June 16th, 2025 at 10:17am MDT