

\$229,900 - 1440 Sherwood Drive, Sherwood Park

MLS® #E4441678

\$229,900

2 Bedroom, 1.50 Bathroom, 540 sqft

Condo / Townhouse on 0.00 Acres

Sherwood Heights, Sherwood Park, AB

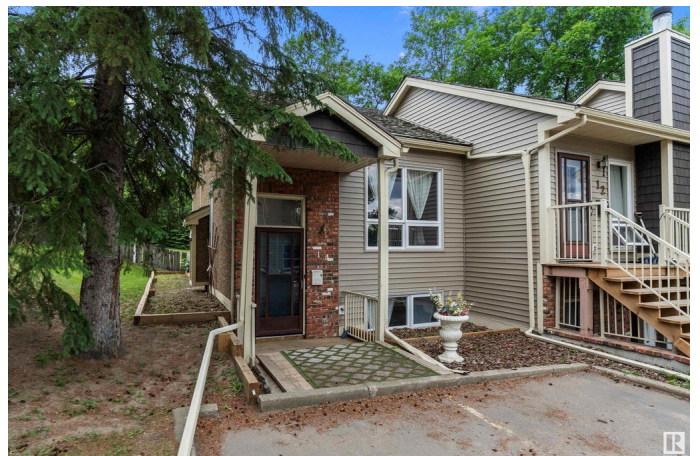
Welcome to this private, end-unit townhouse in the sought-after Summa Glen community—a hidden gem perfect for first-time homeowners or investors looking to add a rental to their portfolio! Upstairs, you'll find a stylish galley kitchen with open sightlines to a cozy living area featuring an electric fireplace for a touch of ambiance. The dining area is bright and inviting, with oversized windows that pour in natural light, and, there's a refreshed half bath for added convenience! Step out onto the spacious upper patio that overlooks tranquil greenspace—ideal for unwinding after a long day. Downstairs, discover two generously sized bedrooms, including a primary retreat with access to a screened-in lower patio—your own peaceful escape! An updated 4piece bathroom and laundry area complete the lower level. Surrounded by greenery and tucked into a serene corner of the complex, this home offers a calm, connected lifestyle with everything you need right at your doorstep! Do not miss this amazing opportunity!

Built in 1983

Essential Information

MLS® # E4441678

Price \$229,900



Bedrooms	2
Bathrooms	1.50
Full Baths	1
Half Baths	1
Square Footage	540
Acres	0.00
Year Built	1983
Type	Condo / Townhouse
Sub-Type	Townhouse
Style	Bi-Level
Status	Active

Community Information

Address	1440 Sherwood Drive
Area	Sherwood Park
Subdivision	Sherwood Heights
City	Sherwood Park
County	ALBERTA
Province	AB
Postal Code	T8A 4W3

Amenities

Amenities	Deck, Hot Water Natural Gas, No Smoking Home, Parking-Visitor, Patio, Storage-In-Suite, See Remarks
Parking	2 Outdoor Stalls

Interior

Appliances	Dishwasher-Built-In, Dryer, Microwave Hood Fan, Refrigerator, Stove-Electric, Washer
Heating	Forced Air-1, Natural Gas
Fireplace	Yes
Fireplaces	Mantel
Stories	2
Has Basement	Yes
Basement	Full, Finished

Exterior

Exterior	Wood, Brick, Vinyl
Exterior Features	Backs Onto Park/Trees, Corner Lot, Golf Nearby, Playground Nearby,

Private Setting, Public Swimming Pool, Public Transportation, Schools,
Shopping Nearby

Roof	Cedar Shakes
Construction	Wood, Brick, Vinyl
Foundation	Concrete Perimeter

School Information

Elementary	Pine Street Elementary
Middle	Sherwood Heights JR High
High	Salisbury Composite High

Additional Information

Date Listed	June 11th, 2025
Days on Market	4
Zoning	Zone 25
Condo Fee	\$366

DATA IS DEEMED RELIABLE BUT IS NOT GUARANTEED ACCURATE BY THE REALTORS® ASSOCIATION OF EDMONTON. COPYRIGHT 2025 BY THE REALTORS® ASSOCIATION OF EDMONTON. ALL RIGHTS RESERVED. Trademarks are owned or controlled by the Canadian Real Estate Association (CREA) and identify real estate professionals who are members of CREA (REALTOR®, REALTORS®) and/or the quality of services they provide (MLS®, Multiple Listing Service®)

Listing information last updated on June 15th, 2025 at 8:32am MDT