

\$259,700

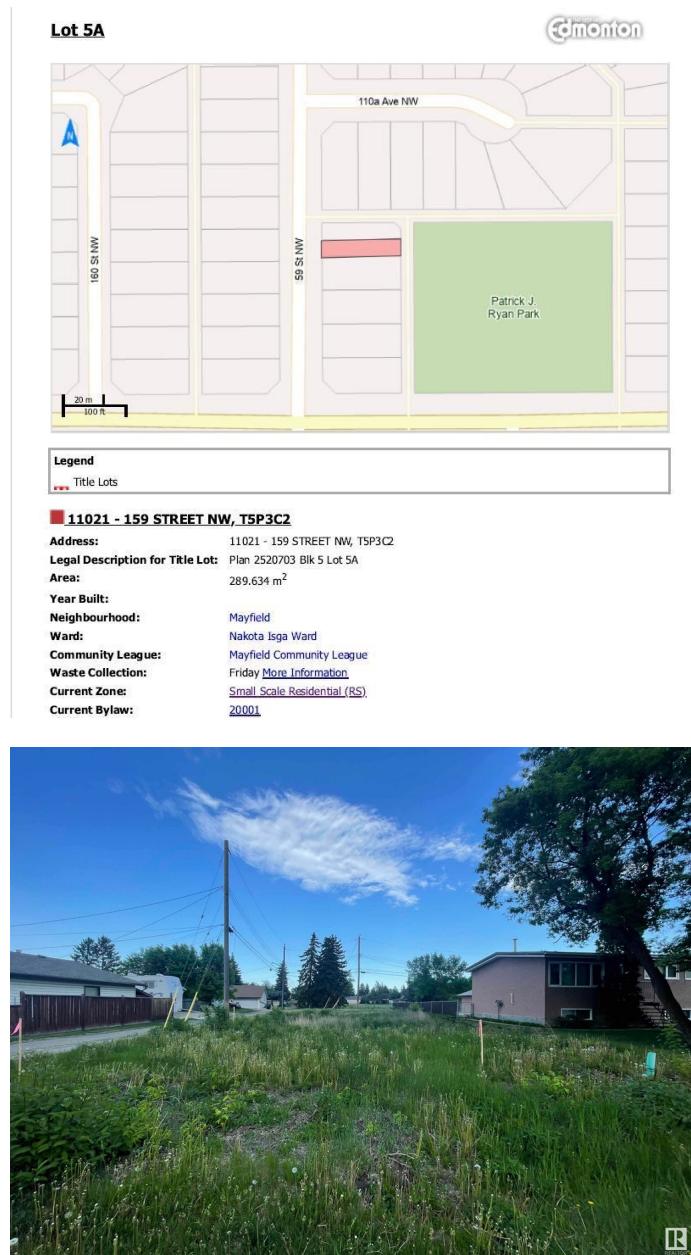
Mayfield, Edmonton, AB

Lot size (25x120) Build your dream home in the heart of Mayfield. This is a rare opportunity to design your custom home or infill project in one of Edmonton's most established and family-friendly neighborhoods. Situated on a 3,117 sq ft flat, ready-to-build lot, this RS-zoned (Small Scale Residential) property is ideal for a single-family home. Located directly across from Patrick J. Ryan Park, the lot offers a serene, green setting while still being just minutes from essential amenities. Enjoy the benefits of living in Mayfield, including access to schools, public transit, and shopping. This property presents a fantastic investment opportunity for homeowners or builders looking to create something special in a welcoming, mature community. Don't miss out - bring your vision to life.

Essential Information

MLS® #	E4441718
Price	\$259,700
Bathrooms	0.00
Acres	0.00
Type	Single Family
Sub-Type	Vacant Lot/Land
Status	Active

Community Information



Address	11021 159 Street
Area	Edmonton
Subdivision	Mayfield
City	Edmonton
County	ALBERTA
Province	AB
Postal Code	T5P 3C2

Exterior

Exterior Features Shopping Nearby, See Remarks

Additional Information

Date Listed	June 11th, 2025
Days on Market	70
Zoning	Zone 21

DATA IS DEEMED RELIABLE BUT IS NOT GUARANTEED ACCURATE BY THE REALTORS® ASSOCIATION OF EDMONTON. COPYRIGHT 2025 BY THE REALTORS® ASSOCIATION OF EDMONTON. ALL RIGHTS RESERVED. Trademarks are owned or controlled by the Canadian Real Estate Association (CREA) and identify real estate professionals who are members of CREA (REALTOR®, REALTORS®) and/or the quality of services they provide (MLS®, Multiple Listing Service®)

Listing information last updated on August 20th, 2025 at 8:32am MDT