

# \$344,900 - 12815 Cumberland Road, Edmonton

MLS® #E4442029

**\$344,900**

3 Bedroom, 2.50 Bathroom, 1,534 sqft  
Condo / Townhouse on 0.00 Acres

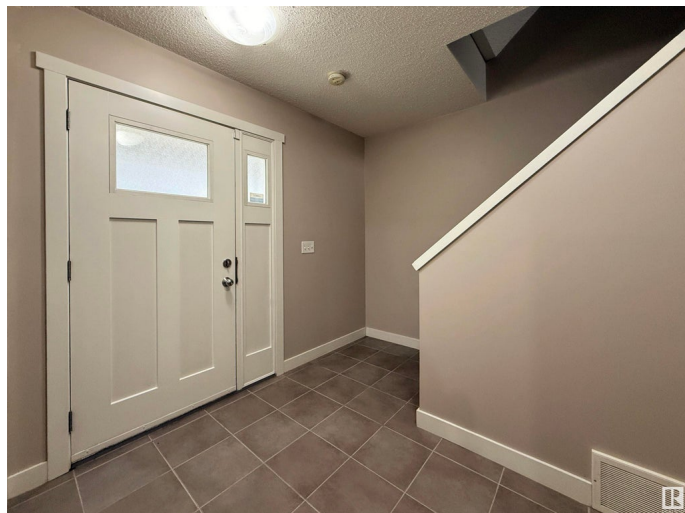
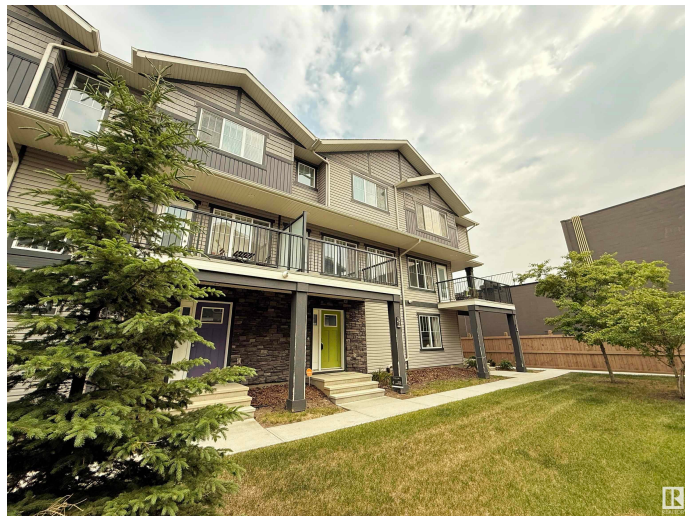
Pembina, Edmonton, AB

Welcome home to this immaculately maintained 3 bedroom townhome with **DOUBLE CAR GARAGE** offering low-maintenance living in a fantastic location. The main level features a U-shaped kitchen with granite countertops, stainless steel appliances, and corner pantry space. Open-concept living and dining areas make it ideal for both everyday living and entertaining. The ground floor entry from the double attached garage includes a large closet and versatile storage space. Upstairs, youâ€™ll find 3 comfortable bedrooms (including primary retreat with ensuite & good-sized closet) and an additional full bathroom. Located close to shopping, dining, and transit, this home offers convenience and lifestyle. Immediate possession available â€“ move in and enjoy!

Built in 2016

## Essential Information

MLS® #	E4442029
Price	\$344,900
Bedrooms	3
Bathrooms	2.50
Full Baths	2
Half Baths	1
Square Footage	1,534



Acres	0.00
Year Built	2016
Type	Condo / Townhouse
Sub-Type	Townhouse
Style	3 Storey
Status	Active

### Community Information

Address	12815 Cumberland Road
Area	Edmonton
Subdivision	Pembina
City	Edmonton
County	ALBERTA
Province	AB
Postal Code	T6V 0M2

### Amenities

Amenities	Carbon Monoxide Detectors, Deck, Detectors Smoke, Exterior Walls-2"x6", Parking-Visitor, Vinyl Windows
Parking	Double Garage Attached

### Interior

Interior Features	ensuite bathroom
Appliances	Dishwasher-Built-In, Dryer, Garage Opener, Microwave Hood Fan, Refrigerator, Stove-Electric, Washer
Heating	Forced Air-1, Natural Gas
Stories	3
Has Basement	Yes
Basement	None, No Basement

### Exterior

Exterior	Wood, Vinyl
Exterior Features	Flat Site, Fruit Trees/Shrubs, Landscaped, Playground Nearby, Public Transportation, Shopping Nearby
Roof	Asphalt Shingles
Construction	Wood, Vinyl
Foundation	Concrete Perimeter

### Additional Information

Date Listed	June 12th, 2025
-------------	-----------------

Days on Market	4
Zoning	Zone 27
Condo Fee	\$239

DATA IS DEEMED RELIABLE BUT IS NOT GUARANTEED ACCURATE BY THE REALTORS® ASSOCIATION OF EDMONTON. COPYRIGHT 2025 BY THE REALTORS® ASSOCIATION OF EDMONTON. ALL RIGHTS RESERVED. Trademarks are owned or controlled by the Canadian Real Estate Association (CREA) and identify real estate professionals who are members of CREA (REALTOR®, REALTORS®) and/or the quality of services they provide (MLS®, Multiple Listing Service®)

Listing information last updated on June 15th, 2025 at 10:47pm MDT