

# **\$129,900 - 119 2305 35a Avenue, Edmonton**

MLS® #E4454985

**\$129,900**

1 Bedroom, 1.00 Bathroom, 588 sqft

Condo / Townhouse on 0.00 Acres

Wild Rose, Edmonton, AB

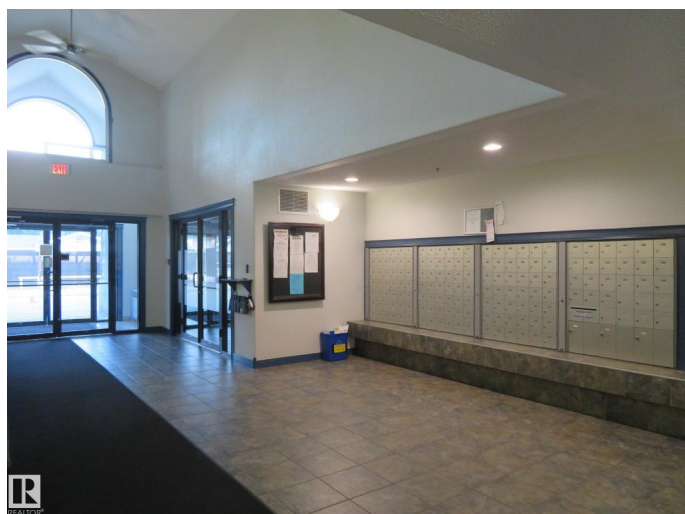
Meticulously maintained condo in Park Place Wild Rose! It is offering 1 bedroom, 1 bath, 1 parking stall. If you're looking for a great investment opportunity or breaking into the real estate market, then your search stops right here! A spacious entrance invites you into a good-sized kitchen, which offers plenty of white cabinets and a peninsula large island. An open-concept floor plan between the living, dining, and the kitchen. HUGE primary bedroom will definitely fit king sized furniture. 4pc main bath & laundry area. A low condo fee includes heat & water. Awesome complex, move-in ready and a great location, just minutes away from parks, trails, shopping and The Meadows Recreation Centre. This building also offers a social room that you can enjoy with friends and family!

Home-sweet-home in the Park Place Wild Rose. Check this out before it's gone!

Built in 2004

## **Essential Information**

MLS® #	E4454985
Price	\$129,900
Bedrooms	1
Bathrooms	1.00
Full Baths	1
Square Footage	588



Acres	0.00
Year Built	2004
Type	Condo / Townhouse
Sub-Type	Lowrise Apartment
Style	Single Level Apartment
Status	Active

### Community Information

Address	119 2305 35a Avenue
Area	Edmonton
Subdivision	Wild Rose
City	Edmonton
County	ALBERTA
Province	AB
Postal Code	T6T 1Z2

### Amenities

Amenities	No Animal Home, No Smoking Home, Parking-Visitor, Party Room, Security Door
Parking	Stall

### Interior

Appliances	Dishwasher-Built-In, Dryer, Fan-Ceiling, Hood Fan, Refrigerator, Stove-Electric, Washer, Window Coverings
Heating	Baseboard, Hot Water, Natural Gas
# of Stories	4
Stories	1
Has Basement	Yes
Basement	See Remarks

### Exterior

Exterior	Wood, Stucco
Exterior Features	Flat Site, Landscaped, Playground Nearby, Public Swimming Pool, Public Transportation, Schools, Shopping Nearby
Roof	Asphalt Shingles
Construction	Wood, Stucco
Foundation	Concrete Perimeter

### Additional Information

Date Listed	August 28th, 2025
-------------	-------------------

Days on Market	1
Zoning	Zone 30
Condo Fee	\$359

DATA IS DEEMED RELIABLE BUT IS NOT GUARANTEED ACCURATE BY THE REALTORS® ASSOCIATION OF EDMONTON. COPYRIGHT 2025 BY THE REALTORS® ASSOCIATION OF EDMONTON. ALL RIGHTS RESERVED. Trademarks are owned or controlled by the Canadian Real Estate Association (CREA) and identify real estate professionals who are members of CREA (REALTOR®, REALTORS®) and/or the quality of services they provide (MLS®, Multiple Listing Service®)

Listing information last updated on August 29th, 2025 at 7:32am MDT