

\$144,900 - 301 8215 84 Avenue, Edmonton

MLS® #E4455031

\$144,900

1 Bedroom, 1.00 Bathroom, 818 sqft

Condo / Townhouse on 0.00 Acres

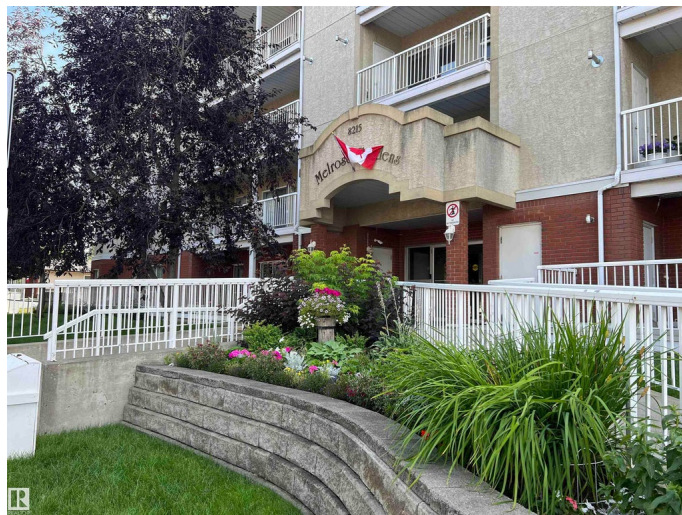
Idylwylde, Edmonton, AB

SPIC and SPAN! Ready to move right in with QUICK possession. This spacious open plan home has gleaming engineered hardwood floors throughout and many upgrades including newer light fixtures, Corian countertops, crown mouldings and limestone backsplash. There is a toasty corner fireplace for those chilly days ahead and each unit has its own furnace (original). Most appliances are newer and the washer and dryer are brand new. The oversize balcony features a huge storage area and a gas BBQ hook up. Location can not be beat and is steps to Bonnie Doon Mall and LRT. There are tons of storage places included. A portable A/C unit is included. The titled heated underground parking spot is close to elevator and also features small storage shelf. This 50+ building is beautifully maintained and all you pay is power and internet/TV.

Built in 1997

Essential Information

MLS® #	E4455031
Price	\$144,900
Bedrooms	1
Bathrooms	1.00
Full Baths	1
Square Footage	818



Acres	0.00
Year Built	1997
Type	Condo / Townhouse
Sub-Type	Lowrise Apartment
Style	Single Level Apartment
Status	Active

Community Information

Address	301 8215 84 Avenue
Area	Edmonton
Subdivision	Idylwylde
City	Edmonton
County	ALBERTA
Province	AB
Postal Code	T6C 4R2

Amenities

Amenities	Closet Organizers, Deck, No Animal Home, No Smoking Home, See Remarks
Parking	Heated

Interior

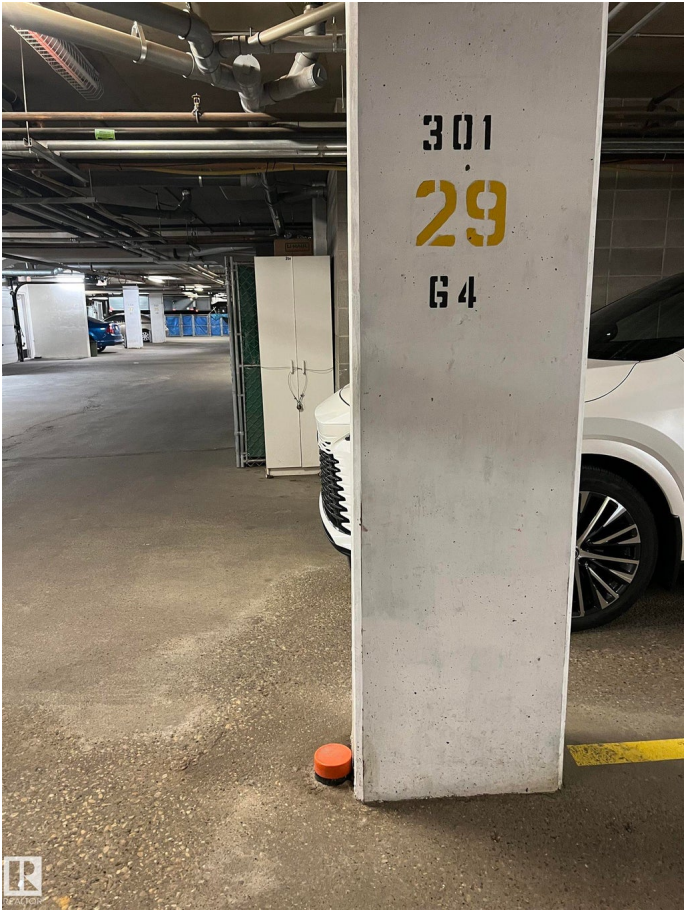
Appliances	Dishwasher-Built-In, Oven-Microwave, Refrigerator, Stacked Washer/Dryer, Stove-Electric
Heating	Forced Air-1, Natural Gas
Fireplaces	Corner
# of Stories	4
Stories	1
Has Basement	Yes
Basement	None, No Basement

Exterior

Exterior	Wood, Brick, Stucco
Exterior Features	See Remarks
Roof	Asphalt Shingles
Construction	Wood, Brick, Stucco
Foundation	Concrete Perimeter

Additional Information

Date Listed	August 28th, 2025
Days on Market	1
Zoning	Zone 18
Condo Fee	\$490



DATA IS DEEMED RELIABLE BUT IS NOT GUARANTEED ACCURATE BY THE REALTORS® ASSOCIATION OF EDMONTON. COPYRIGHT 2025 BY THE REALTORS® ASSOCIATION OF EDMONTON. ALL RIGHTS RESERVED.Trademarks are owned or controlled by the Canadian Real Estate Association (CREA) and identify real estate professionals who are members of CREA (REALTOR®, REALTORS®) and/or the quality of services they provide (MLS®, Multiple Listing Service®)

Listing information last updated on August 29th, 2025 at 2:17am MDT