

\$519,900 - 4304 79 Street, Edmonton

MLS® #E4455440

\$519,900

4 Bedroom, 3.00 Bathroom, 3,412 sqft
Single Family on 0.00 Acres

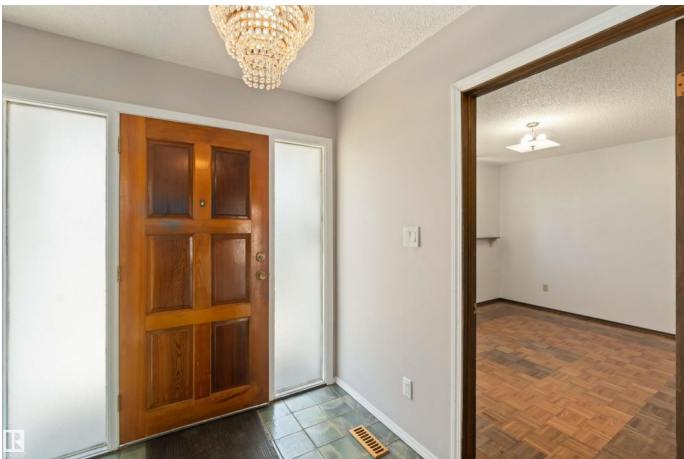
Tweddle Place, Edmonton, AB

Discover your dream home featuring a spectacular heated 3-car garage perfect for car collectors and DIY enthusiasts. Premium Features Include: â€¢ Corner Lot â€¢ Expansive Heated 3-car garage with workshop potential â€¢ 4 Bedrooms above grade â€¢ Murphy Bed included in one of the bedrooms â€¢ Sunshine Ceiling in the kitchen â€¢ Cozy wood burning fireplace for year-round ambiance â€¢ Private sauna for ultimate relaxation with steam capacity â€¢ RV parking pad for adventure seekers â€¢ Convenient main-level laundry â€¢ Entertaining bar perfect for hosting â€¢ Covered breezeway connecting home to garage â€¢ Windows (4 Years Old) â€¢ Shingles (4 Years Old) â€¢ Fruit Trees â€¢ Move-in ready This rare find combines family comfort with serious storage and workspace - ideal for those who appreciate both luxury living and practical functionality.

Built in 1974

Essential Information

MLS® #	E4455440
Price	\$519,900
Bedrooms	4
Bathrooms	3.00
Full Baths	2



Half Baths	2
Square Footage	3,412
Acres	0.00
Year Built	1974
Type	Single Family
Sub-Type	Detached Single Family
Style	2 Storey
Status	Active

Community Information

Address	4304 79 Street
Area	Edmonton
Subdivision	Tweddle Place
City	Edmonton
County	ALBERTA
Province	AB
Postal Code	T9E 0R7

Amenities

Amenities	Bar, Deck
Parking Spaces	6
Parking	Triple Garage Attached

Interior

Interior Features	ensuite bathroom
Appliances	Dishwasher-Built-In, Dryer, Freezer, Garburator, Oven-Microwave, Refrigerator, Stove-Electric, Vacuum System Attachments, Vacuum Systems, Washer
Heating	Forced Air-1, Natural Gas
Fireplace	Yes
Fireplaces	Masonry
Stories	3
Has Basement	Yes
Basement	Full, Finished

Exterior

Exterior	Wood, Brick, Vinyl
Exterior Features	Corner Lot, Fenced, Fruit Trees/Shrubs, Golf Nearby, Playground Nearby, Schools, Shopping Nearby

Roof	Asphalt Shingles
Construction	Wood, Brick, Vinyl
Foundation	Concrete Perimeter

School Information

Elementary	Malcolm Tweddle
Middle	Edith Rogers
High	J. Percy Page

Additional Information

Date Listed	August 30th, 2025
Days on Market	12
Zoning	Zone 29

DATA IS DEEMED RELIABLE BUT IS NOT GUARANTEED ACCURATE BY THE REALTORS® ASSOCIATION OF EDMONTON. COPYRIGHT 2025 BY THE REALTORS® ASSOCIATION OF EDMONTON. ALL RIGHTS RESERVED. Trademarks are owned or controlled by the Canadian Real Estate Association (CREA) and identify real estate professionals who are members of CREA (REALTOR®, REALTORS®) and/or the quality of services they provide (MLS®, Multiple Listing Service®)

Listing information last updated on September 11th, 2025 at 11:32am MDT