

## \$79,000 - 411 12831 66 Street, Edmonton

MLS® #E4455853

**\$79,000**

1 Bedroom, 1.00 Bathroom, 523 sqft

Condo / Townhouse on 0.00 Acres

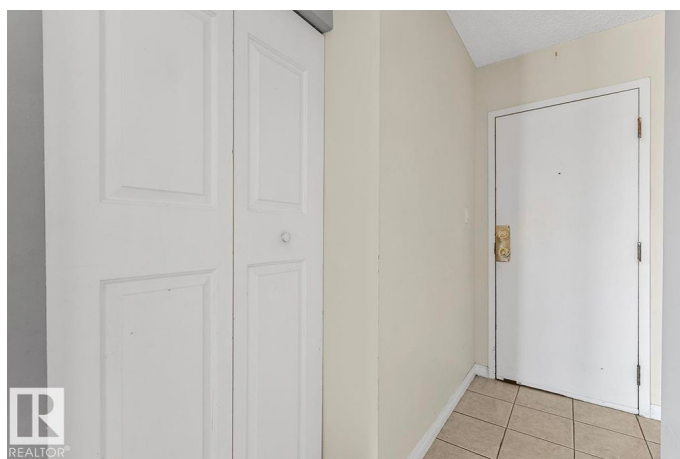
Belvedere, Edmonton, AB

Affordable 1-bed, 1-bath apartment with 522 sq. ft. of functional living space. Features include a galley kitchen, spacious bedroom and an oversized west-facing balcony to enjoy evening sunsets. Located in Hollyburn Towers, this secure, concrete building has seen numerous updates, including reinforced balconies, refreshed common spaces, security cameras and dual elevators. This property is steps from public transit, schools, shopping, parks, and the Belvedere Transit Centre - ideal for anyone seeking affordable ownership or an investment property.

Built in 1983

### Essential Information

MLS® #	E4455853
Price	\$79,000
Bedrooms	1
Bathrooms	1.00
Full Baths	1
Square Footage	523
Acres	0.00
Year Built	1983
Type	Condo / Townhouse
Sub-Type	Apartment High Rise
Style	Single Level Apartment
Status	Active



## Community Information

Address	411 12831 66 Street
Area	Edmonton
Subdivision	Belvedere
City	Edmonton
County	ALBERTA
Province	AB
Postal Code	T5L 0A4

## Amenities

Amenities	Detectors Smoke, Parking-Visitor
Parking	See Remarks

## Interior

Appliances	Refrigerator, Stove-Electric
Heating	Baseboard, See Remarks
# of Stories	4
Stories	1
Has Basement	Yes
Basement	None, No Basement

## Exterior

Exterior	Concrete
Exterior Features	Playground Nearby, Public Transportation, Schools, Shopping Nearby
Roof	Unknown
Construction	Concrete
Foundation	Concrete Perimeter

## Additional Information

Date Listed	September 3rd, 2025
Days on Market	2
Zoning	Zone 02
Condo Fee	\$375

DATA IS DEEMED RELIABLE BUT IS NOT GUARANTEED ACCURATE BY THE REALTORS® ASSOCIATION OF EDMONTON. COPYRIGHT 2025 BY THE REALTORS® ASSOCIATION OF EDMONTON. ALL RIGHTS RESERVED. Trademarks are owned or controlled by the Canadian Real Estate Association (CREA) and identify real estate professionals who are members of CREA (REALTOR®, REALTORS®) and/or the quality of services they provide (MLS®, Multiple Listing Service®)

Listing information last updated on September 5th, 2025 at 10:03am MDT