

Courtesy Of Vanessa N Landry Of Initia Real Estate

\$439,900 - 8815 76 Street, Edmonton

MLS® #E4461718

\$439,900

5 Bedroom, 2.00 Bathroom, 911 sqft
Single Family on 0.00 Acres

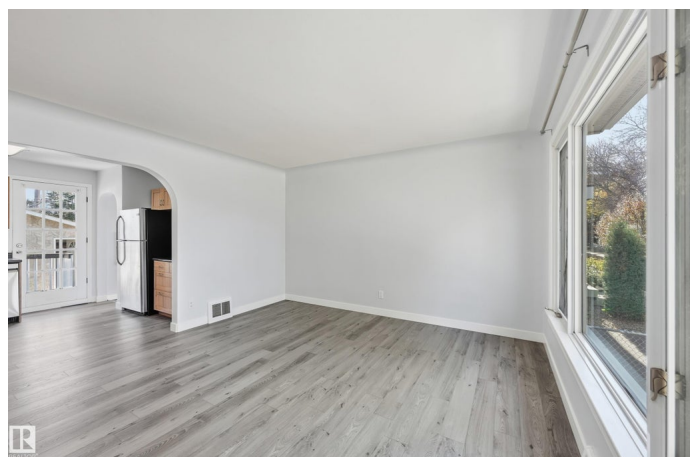
Idylwylde, Edmonton, AB

****This is HOME**** Centrally located UPDATED character home in Idylwylde! This bungalow sits on a corner lot and offers an open concept living space with a large backyard and fully finished basement. As you enter the bright living room it will make you feel right at home; few steps down is a small yet elegant dining area just steps from the kitchen. Kitchen looks out onto the backyard and offer plenty of counter space for cooking; 3 bedrooms and renovated full bath complete the main floor. The basement has a separate entrance for potential income suite and has received some updates including new flooring and paint; it offers 2 bedrooms, full bath, living room and laundry room. This property has RV parking, a large gazebo for late night hang outs and a double detached garage with plenty of extra parking. Walking distance to new LRT line and Bonnie Doon Mall. Located on a mature street with easy access to downtown and Whyte Avenue.

Built in 1952

Essential Information

MLS® #	E4461718
Price	\$439,900
Bedrooms	5
Bathrooms	2.00



Full Baths	2
Square Footage	911
Acres	0.00
Year Built	1952
Type	Single Family
Sub-Type	Detached Single Family
Style	Bungalow
Status	Active

Community Information

Address	8815 76 Street
Area	Edmonton
Subdivision	Idylwylde
City	Edmonton
County	ALBERTA
Province	AB
Postal Code	T6C 2K1

Amenities

Amenities	Deck, Fire Pit, Parking-Extra, R.V. Storage
Parking	Double Garage Detached

Interior

Appliances	Dishwasher-Built-In, Dryer, Hood Fan, Refrigerator, Stove-Electric, Washer
Heating	Forced Air-1, Natural Gas
Stories	2
Has Basement	Yes
Basement	Full, Finished

Exterior

Exterior	Wood, Vinyl
Exterior Features	Fenced, Playground Nearby, Public Transportation, Schools, Shopping Nearby, Ski Hill Nearby
Roof	Asphalt Shingles
Construction	Wood, Vinyl
Foundation	Concrete Perimeter

Additional Information

Date Listed October 10th, 2025

Days on Market 12

Zoning Zone 18

DATA IS DEEMED RELIABLE BUT IS NOT GUARANTEED ACCURATE BY THE REALTORS® ASSOCIATION OF EDMONTON. COPYRIGHT 2025 BY THE REALTORS® ASSOCIATION OF EDMONTON. ALL RIGHTS RESERVED. Trademarks are owned or controlled by the Canadian Real Estate Association (CREA) and identify real estate professionals who are members of CREA (REALTOR®, REALTORS®) and/or the quality of services they provide (MLS®, Multiple Listing Service®)

Listing information last updated on October 22nd, 2025 at 7:02am MDT