

# \$999,900 - Rr 84 Highway 43, Rural Grande Prairie No. 1, County of

MLS® #A2000846

**\$999,900**

0 Bedroom, 0.00 Bathroom,  
Land on 12.50 Acres

NONE, Rural Grande Prairie No. 1, County of, Alberta

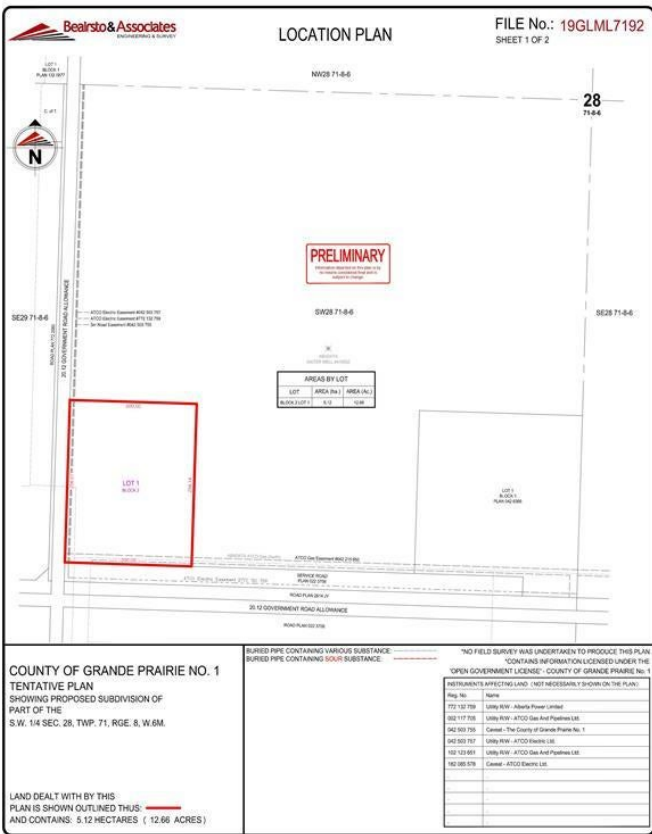
Fantastic location to set up your business. One of the few industrial locations to set up on west of Grande Prairie with Highway 43 frontage and access. Whether you have an oilfield service company, an agricultural enterprise or a commercial endeavor, you will surely benefit from this great exposure. 12+ acres zoned RM-4 just 8.5 miles west of Grande Prairie city limits and just outside the town of Wembley, directly across the Highway from Tenaris. Great setup with service road directly in front of property, all services close by and great slope on the property. At about 80k per acre you will be hard pressed to find a comparable property.

## Essential Information

|           |                 |
|-----------|-----------------|
| MLS® #    | A2000846        |
| Price     | \$999,900       |
| Bathrooms | 0.00            |
| Acres     | 12.50           |
| Type      | Land            |
| Sub-Type  | Industrial Land |
| Status    | Active          |

## Community Information

|             |                  |
|-------------|------------------|
| Address     | Rr 84 Highway 43 |
| Subdivision | NONE             |



|             |                                       |
|-------------|---------------------------------------|
| City        | Rural Grande Prairie No. 1, County of |
| County      | Grande Prairie No. 1, County of       |
| Province    | Alberta                               |
| Postal Code | T0H 3S0                               |

### **Additional Information**

|                |                     |
|----------------|---------------------|
| Date Listed    | September 6th, 2022 |
| Days on Market | 1079                |
| Zoning         | RM-4                |

### **Listing Details**

|                |                       |
|----------------|-----------------------|
| Listing Office | RE/MAX Grande Prairie |
|----------------|-----------------------|

Data is supplied by Pillar 9â„¢ MLS® System. Pillar 9â„¢ is the owner of the copyright in its MLS® System. Data is deemed reliable but is not guaranteed accurate by Pillar 9â„¢. The trademarks MLS®, Multiple Listing Service® and the associated logos are owned by The Canadian Real Estate Association (CREA) and identify the quality of services provided by real estate professionals who are members of CREA. Used under license.