

\$1,350,000 - 253058 Highway 817, Rural Wheatland County

MLS® #A2131367

\$1,350,000

0 Bedroom, 0.00 Bathroom,
Agri-Business on 126.93 Acres

NONE, Rural Wheatland County, Alberta

Revenue opportunities in so many ways. This great investment has it all. 90 acres of hay, Clay pit with approximately 1,000,000 meters of clay, serviced camping spots, heated 40x45 shop with sandblasting bay attached 20x60, fabric shop 27x50, 1120 sqft mobile home and unfinished 2900+sqft home with attached garage. Contact realtor for more information.

Built in 2007

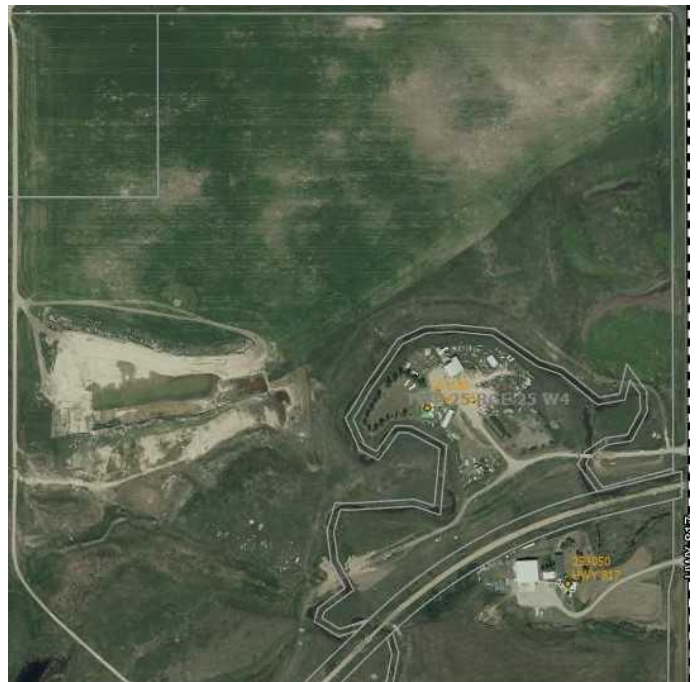
Essential Information

MLS® #	A2131367
Price	\$1,350,000
Bathrooms	0.00
Acres	126.93
Year Built	2007
Type	Agri-Business
Sub-Type	Agriculture
Status	Active

Community Information

Address	253058 Highway 817
Subdivision	NONE
City	Rural Wheatland County
County	Wheatland County
Province	Alberta
Postal Code	T1P 0V7

Additional Information



Date Listed	May 9th, 2024
Days on Market	466
Zoning	1

Listing Details

Listing Office	KIC Realty
----------------	------------

Data is supplied by Pillar 9â„¢ MLS® System. Pillar 9â„¢ is the owner of the copyright in its MLS® System. Data is deemed reliable but is not guaranteed accurate by Pillar 9â„¢. The trademarks MLS®, Multiple Listing Service® and the associated logos are owned by The Canadian Real Estate Association (CREA) and identify the quality of services provided by real estate professionals who are members of CREA. Used under license.