

\$999,900 - Nw;21;71;7;6 43 Highway, Dimsdale

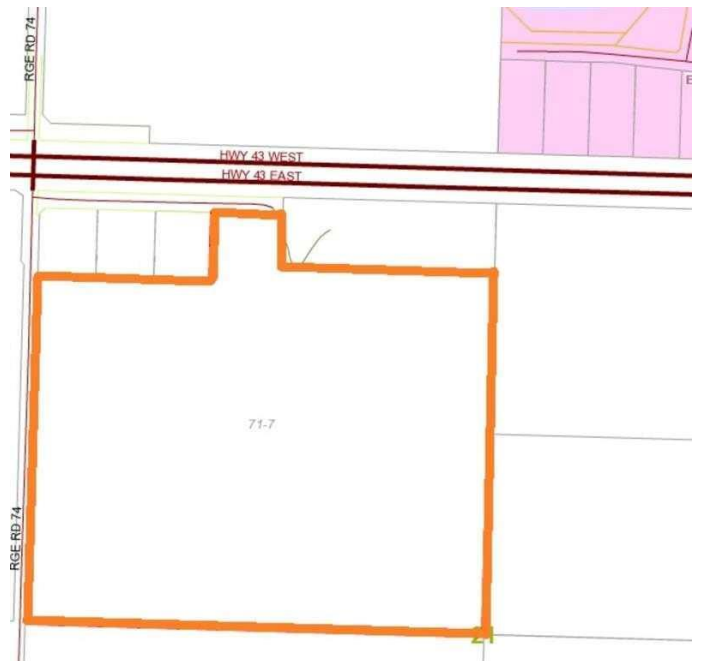
MLS® #A2155754

\$999,900

0 Bedroom, 0.00 Bathroom,
Land on 125.35 Acres

NONE, Dimsdale, Alberta

MULTI-USE DEVELOPMENT LAND ONLY
MINUTES WEST OF GRANDE PRAIRIE,
ALBERTA!!! This 125 acre parcel is perfectly
positioned to become the next rural
commercial industrial development site. The
recently approved Alberta Transportation
Highway interchange will be positioned on this
parcel. This means huge exposure and the
potential for major return on investment.
Please inquire about further details on the
options here. It is only 5km's west of the city
and 3 km's from the new hwy43. interchange &
north by-pass. The price has been reduced
substantially and the time to capture the
opportunity is now. Highway access, services
in the area, preliminary residential &
commercial ASP's are available as a
supplement to the listing. Call for more
information on this unique
investment/development opportunity.



Essential Information

MLS® #	A2155754
Price	\$999,900
Bathrooms	0.00
Acres	125.35
Type	Land
Sub-Type	Commercial Land
Status	Active

Community Information

Address	Nw;21;71;7;6 43 Highway
Subdivision	NONE
City	Dimsdale
County	Grande Prairie No. 1, County of
Province	Alberta
Postal Code	T8W 5H6

Additional Information

Date Listed	August 6th, 2024
Days on Market	376
Zoning	AG

Listing Details

Listing Office	RE/MAX Grande Prairie
----------------	-----------------------

Data is supplied by Pillar 9â„¢ MLSÂ® System. Pillar 9â„¢ is the owner of the copyright in its MLSÂ® System. Data is deemed reliable but is not guaranteed accurate by Pillar 9â„¢. The trademarks MLSÂ®, Multiple Listing ServiceÂ® and the associated logos are owned by The Canadian Real Estate Association (CREA) and identify the quality of services provided by real estate professionals who are members of CREA. Used under license.