

# \$349,900 - 217, 955 Mcpherson Road Ne, Calgary

MLS® #A2160924

**\$349,900**

1 Bedroom, 1.00 Bathroom, 626 sqft

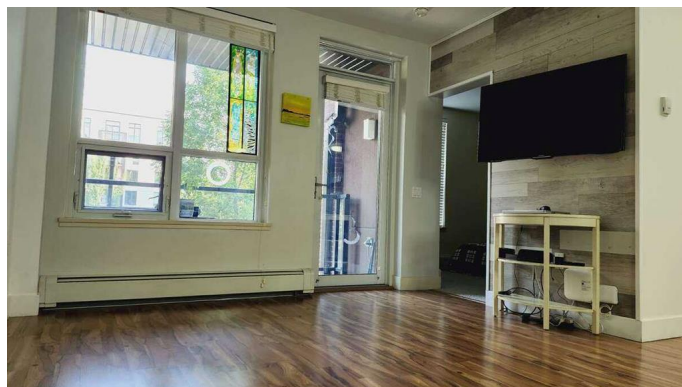
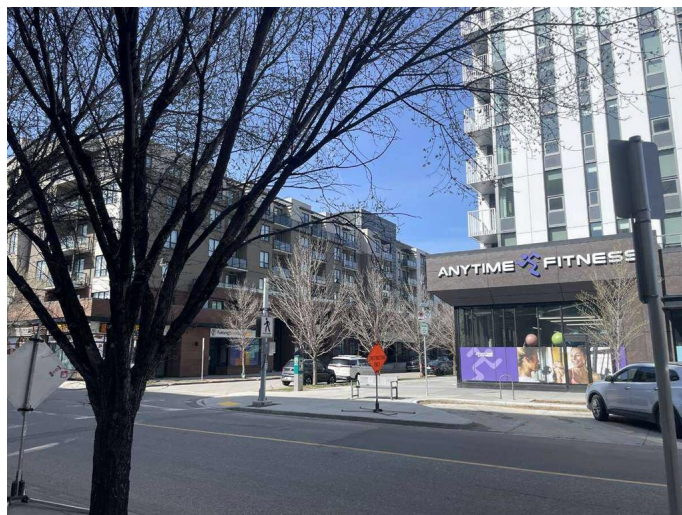
Residential on 0.00 Acres

Bridgeland/Riverside, Calgary, Alberta

For more information, please click the "More Information" button.

McPherson Place is a beautiful large (626 sf) 1 bedroom condominium unit located in the desirable Bridgeland neighborhood of downtown Calgary. Constructed of poured concrete, the 11 year old building has no structural problems unlike many of the potential downtown high rise buildings. The inside is in very good shape with fresh paint in the living room, bedroom and closet. New carpet has been installed in the bedroom. The large dining area (7'10"x6') can accommodate a murphy bed that converts into a table.

In-suite washer/dryer included. Included is a titled large handicap-sized (158" wide vs 103" wide) heated underground parking stall located next to the 2 elevators. The north-facing unit is cool in the summer. The large balcony overlooks the green area on quiet McPherson Road. With a peak-a-boo view of Murdoch Park, the unit is within steps of large Murdoch Park. The Bow Riverside walkway is accessible via a pedestrian overpass across the street from the south side of the building. The walkway also takes you to the Calgary Bridgeland/Memorial light rail station. The light rail station goes a long way towards potentially eliminating the need for an expensive automobile. The neighborhood is well kept and includes a fitness center across the street. Restaurants abound. Two off-leash dog parks are within walking distance. An enclosed dog-run is located on the west side



of the property next to the west exit making those morning winter walks very convenient.

Built in 2013

### **Essential Information**

MLS® #	A2160924
Price	\$349,900
Bedrooms	1
Bathrooms	1.00
Full Baths	1
Square Footage	626
Acres	0.00
Year Built	2013
Type	Residential
Sub-Type	Apartment
Style	High-Rise (5+)
Status	Active

### **Community Information**

Address	217, 955 Mcpherson Road Ne
Subdivision	Bridgeland/Riverside
City	Calgary
County	Calgary
Province	Alberta
Postal Code	T2E 6V3

### **Amenities**

Amenities	Dog Run, Laundry, Parking, Snow Removal
Parking Spaces	1
Parking	Stall, Underground

### **Interior**

Interior Features	No Smoking Home, Vinyl Windows, Elevator, Granite Counters, Kitchen Island, Open Floorplan, Wired for Data, Walk-In Closet(s)
Appliances	Electric Oven, Stove(s), Dishwasher, Microwave, Refrigerator, Range Hood, Washer/Dryer
Heating	Central, Electric
Cooling	None

# of Stories	6
Basement	None

## Exterior

Exterior Features	Dog Run, Uncovered Courtyard
Lot Description	Garden, Lawn, Treed, Dog Run Fenced In, Greenbelt, Underground Sprinklers
Roof	Flat
Construction	Concrete, Brick, Mixed
Foundation	Poured Concrete

## Additional Information

Date Listed	August 27th, 2024
Days on Market	358
Zoning	R1

## Listing Details

Listing Office	Easy List Realty
----------------	------------------

Data is supplied by Pillar 9â„¢ MLS® System. Pillar 9â„¢ is the owner of the copyright in its MLS® System. Data is deemed reliable but is not guaranteed accurate by Pillar 9â„¢. The trademarks MLS®, Multiple Listing Service® and the associated logos are owned by The Canadian Real Estate Association (CREA) and identify the quality of services provided by real estate professionals who are members of CREA. Used under license.