

\$1,250,000 - On Highway 771, Rural Lacombe County

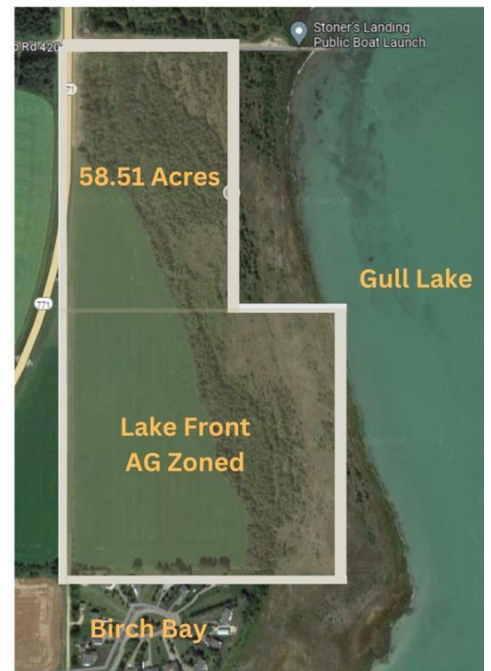
MLS® #A2177208

\$1,250,000

0 Bedroom, 0.00 Bathroom,
Land on 58.51 Acres

NONE, Rural Lacombe County, Alberta

58.51 acre parcel with Gull Lake frontage currently Zoned AG with Parkland Beach to the north and Birch Bay to the south. 27 Acres of this piece are cultivated. Possibilities are endless here with county approval development ideas include a Wedding Venue, Campground or Residential Development. Directly to the north is the Stoner's Landing public boat launch. Rare opportunity here to own lakefront property on the west side of Gull Lake with Paved Access.



Essential Information

MLS® #	A2177208
Price	\$1,250,000
Bathrooms	0.00
Acres	58.51
Type	Land
Sub-Type	Residential Land
Status	Active

Community Information

Address	On Highway 771
Subdivision	NONE
City	Rural Lacombe County
County	Lacombe County
Province	Alberta
Postal Code	T4L 1N1

Additional Information



Date Listed	November 11th, 2024
Days on Market	281
Zoning	AG

Listing Details

Listing Office	Century 21 Maximum
----------------	--------------------

Data is supplied by Pillar 9â„¢ MLSÂ® System. Pillar 9â„¢ is the owner of the copyright in its MLSÂ® System. Data is deemed reliable but is not guaranteed accurate by Pillar 9â„¢. The trademarks MLSÂ®, Multiple Listing ServiceÂ® and the associated logos are owned by The Canadian Real Estate Association (CREA) and identify the quality of services provided by real estate professionals who are members of CREA. Used under license.