

\$2,500 - 723 1 Street Se, Medicine Hat

MLS® #A2187906

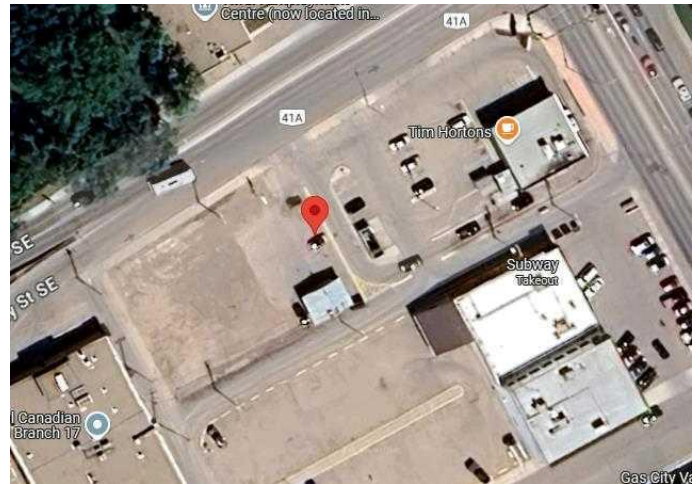
\$2,500

0 Bedroom, 0.00 Bathroom,
Land on 0.39 Acres

SE Hill, Medicine Hat, Alberta

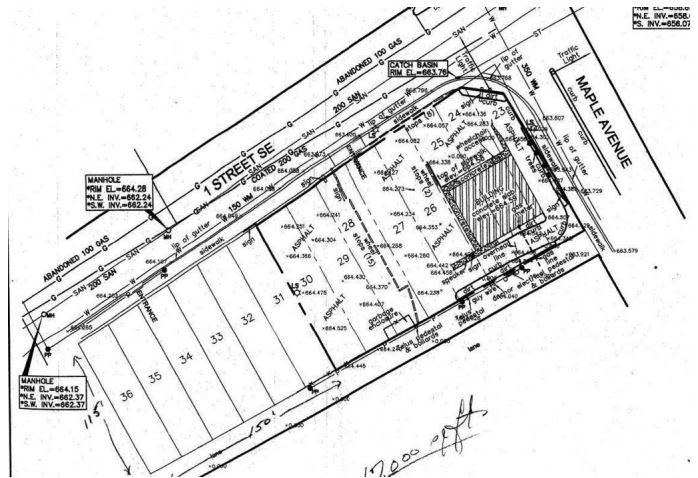
Prime vacant lot for lease just off Maple Ave, adjacent to Tim Hortons and the Canadian Legion. Located in a high-traffic area, perfect for retail or commercial development. Excellent visibility and accessibility in a bustling neighborhood. Don't miss this opportunity for strategic investment. The lot measures 150 ft x 115ft, offering 17,000 sqft.

** Building on corner of lot has been removed.



Essential Information

MLS® #	A2187906
Price	\$2,500
Bathrooms	0.00
Acres	0.39
Type	Land
Sub-Type	Commercial Land
Status	Active



Community Information

Address	723 1 Street Se
Subdivision	SE Hill
City	Medicine Hat
County	Medicine Hat
Province	Alberta
Postal Code	T1A 0B3

Additional Information

Date Listed	January 15th, 2025
-------------	--------------------

Days on Market 218

Listing Details

Listing Office RE/MAX MEDALTA REAL ESTATE

Data is supplied by Pillar 9â„¢ MLSÂ® System. Pillar 9â„¢ is the owner of the copyright in its MLSÂ® System. Data is deemed reliable but is not guaranteed accurate by Pillar 9â„¢. The trademarks MLSÂ®, Multiple Listing ServiceÂ® and the associated logos are owned by The Canadian Real Estate Association (CREA) and identify the quality of services provided by real estate professionals who are members of CREA. Used under license.