

# \$240,900 - #2, 284029 Township Road 422, Rural Ponoka County

---

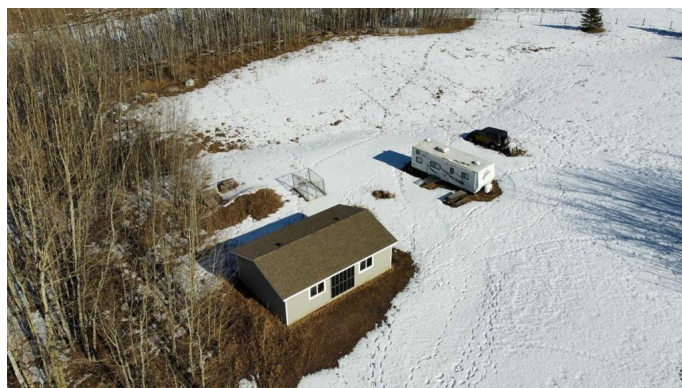
MLS® #A2190034

**\$240,900**

0 Bedroom, 0.00 Bathroom,  
Land on 3.96 Acres

Heartland Country Estates, Rural Ponoka  
County, Alberta

Are you ready? Discover 3.96 acres of prime land in the highly sought-after Gull Lake area, just a short stroll from the lake and convenient dock access. Immerse yourself in the stunning lake views and enjoy the serene natural surroundings within the Heartland Country Estates subdivision. This property is located near Raymond Shores and Meridian Beach, nearby town and cities is within 25 minutes drive like Lacombe and Ponoka. Included is a spacious 20x30 garage, a capped deep well, and electricity ready at the property line, everything you need to start building your dream retreat!



## Essential Information

MLS® #	A2190034
Price	\$240,900
Bathrooms	0.00
Acres	3.96
Type	Land
Sub-Type	Residential Land
Status	Active

## Community Information

Address	#2, 284029 Township Road 422
Subdivision	Heartland Country Estates

City	Rural Ponoka County
County	Ponoka County
Province	Alberta
Postal Code	T4J1V9

### **Amenities**

Utilities	Electricity at Lot Line
-----------	-------------------------

### **Additional Information**

Date Listed	January 28th, 2025
Days on Market	97
Zoning	CR

### **Listing Details**

Listing Office	eXp Realty
----------------	------------

Data is supplied by Pillar 9â„¢ MLS® System. Pillar 9â„¢ is the owner of the copyright in its MLS® System. Data is deemed reliable but is not guaranteed accurate by Pillar 9â„¢. The trademarks MLS®, Multiple Listing Service® and the associated logos are owned by The Canadian Real Estate Association (CREA) and identify the quality of services provided by real estate professionals who are members of CREA. Used under license.