

\$787,500 - 101, 1000 Harvie Heights Road, Harvie Heights

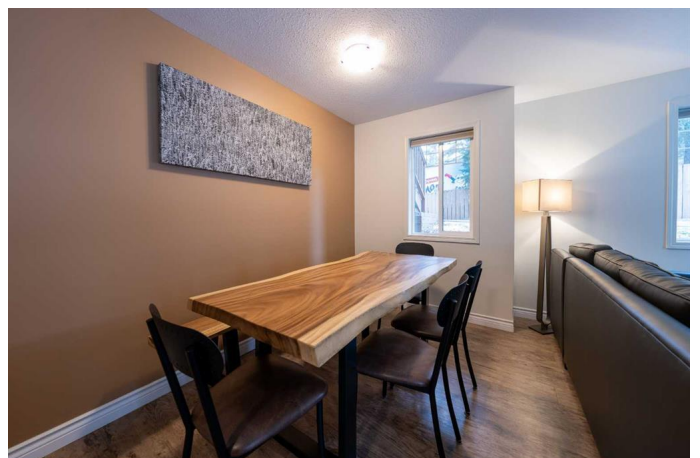
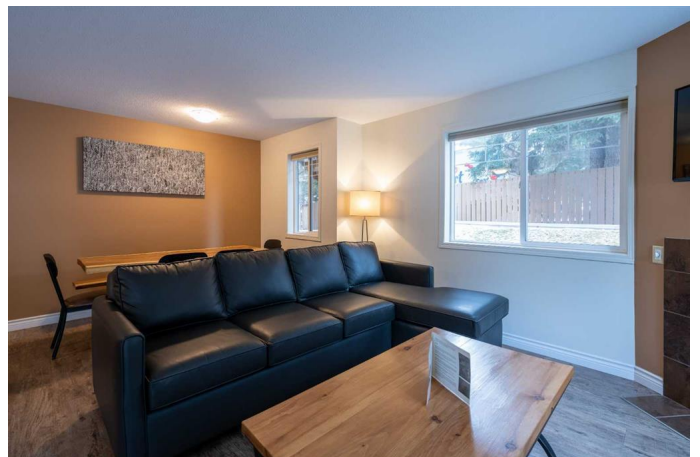
MLS® #A2191279

\$787,500

2 Bedroom, 1.00 Bathroom, 749 sqft
Residential on 0.00 Acres

NONE, Harvie Heights, Alberta

This one level condominium with exterior entrance is located at Banff Boundary Lodge just minutes from Canmore and just 2 minutes to Banff National Park East Gate. This very quiet condo is situated at the far end of the complex near the firepit and barbeque area. The townhouse has been renovated. Renovations include vinyl plank flooring throughout, new kitchen and bath cabinets and counters, and new tub. The expansive open living area with gas fireplace and dining area includes a high-quality sofa with memory foam pull out queen mattress and chaise lounge. There is a large live edge dining room table, bench and chairs to easily accommodate six. The kitchen includes self cleaning stove, fridge, and dishwasher. There are two bedrooms—one with a King size bed and the other with a Queen size bed. Present sleeping arrangements, with pull out couch in the living room, sleeps a total of six. However, converting the King room to include two beds would increase sleeping capacity to eight. The full bathroom includes new cupboards, counter, sink, and deep tub with white subway tiles. The condo enjoys the comfort of in floor heating resulting in no shared heating with other condominiums. There is a large shared outdoor hot tub. Clothes washers and dryers are in the amenity



building and parking is unassigned.
This can be your Rocky Mountain retreat for personal use and a successful vacation revenue property through AirBnB or similar platform. The operation is turn-key ready with all furnishings, kitchen supplies, and linens included.

Built in 1998

Essential Information

| | |
|----------------|-------------------|
| MLS® # | A2191279 |
| Price | \$787,500 |
| Bedrooms | 2 |
| Bathrooms | 1.00 |
| Full Baths | 1 |
| Square Footage | 749 |
| Acres | 0.00 |
| Year Built | 1998 |
| Type | Residential |
| Sub-Type | Row/Townhouse |
| Style | 1 and Half Storey |
| Status | Active |

Community Information

| | |
|-------------|-------------------------------|
| Address | 101, 1000 Harvie Heights Road |
| Subdivision | NONE |
| City | Harvie Heights |
| County | Bighorn No. 8, M.D. of |
| Province | Alberta |
| Postal Code | T1W 2W2 |

Amenities

| | |
|----------------|-------------|
| Amenities | Spa/Hot Tub |
| Parking Spaces | 1 |
| Parking | Stall |

Interior

| | |
|-------------------|-------------|
| Interior Features | See Remarks |
|-------------------|-------------|

| | |
|-----------------|------------------------------------|
| Appliances | Dishwasher, Refrigerator, Stove(s) |
| Heating | In Floor |
| Cooling | None |
| Fireplace | Yes |
| # of Fireplaces | 1 |
| Fireplaces | Gas |
| # of Stories | 3 |
| Basement | None |

Exterior

| | |
|-------------------|-----------------|
| Exterior Features | None |
| Lot Description | See Remarks |
| Roof | Asphalt |
| Construction | Stone, Stucco |
| Foundation | Poured Concrete |

Additional Information

| | |
|----------------|--------------------|
| Date Listed | January 31st, 2025 |
| Days on Market | 137 |
| Zoning | F |

Listing Details

| | |
|----------------|--------|
| Listing Office | Revere |
|----------------|--------|

Data is supplied by Pillar 9â„¢ MLSÂ® System. Pillar 9â„¢ is the owner of the copyright in its MLSÂ® System. Data is deemed reliable but is not guaranteed accurate by Pillar 9â„¢. The trademarks MLSÂ®, Multiple Listing ServiceÂ® and the associated logos are owned by The Canadian Real Estate Association (CREA) and identify the quality of services provided by real estate professionals who are members of CREA. Used under license.