

# \$10 - 327 41 Avenue Ne, Calgary

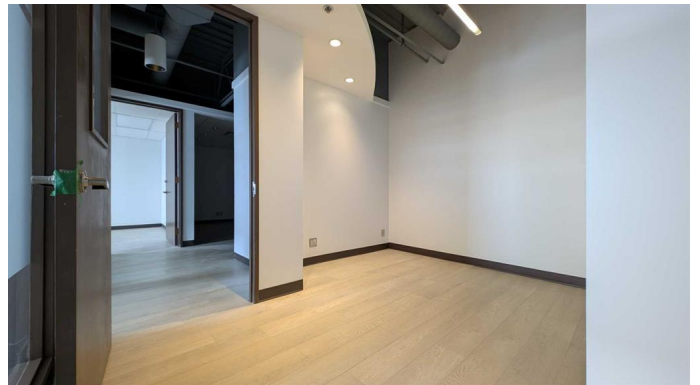
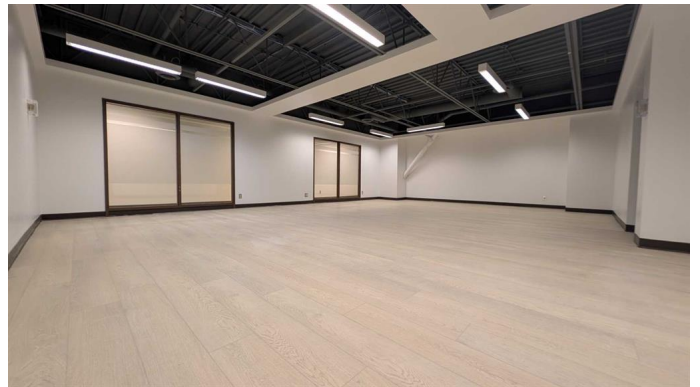
MLS® #A2194877

**\$10**

0 Bedroom, 0.00 Bathroom,  
Commercial on 0.44 Acres

Greenview Industrial Park, Calgary, Alberta

Experience a new standard of office space at Greenview Industrial Business Park, where recent upgrades and renovations have transformed the entire building. From the freshly painted renovated common areas, every detail has been thoughtfully designed to enhance your workspace. Located in a central area with immediate access to and from Deerfoot, Edmonton Trail, Centre St and McKnight Trail offers a convenient alternative to downtown commutes. With office units ranging from 1900 SF to 3900 SF, this building can accommodate businesses of all sizes. Whether you're a small startup or a large corporation, we have the perfect space for you. Unreserved parking stalls, and reserved underground and surface parking available. Enjoy excellent nearby amenities, including daycare facilities, the Deerfoot City and McCall Industrial Park. Public transit route services the building providing convenient access for your employees and clients. Call for your private tour today!! Zoned IR



Built in 1975

## Essential Information

MLS® #	A2194877
Price	\$10
Bathrooms	0.00
Acres	0.44
Year Built	1975

Type	Commercial
Sub-Type	Office
Status	Active

### **Community Information**

Address	327 41 Avenue Ne
Subdivision	Greenview Industrial Park
City	Calgary
County	Calgary
Province	Alberta
Postal Code	T2E 2N4

### **Additional Information**

Date Listed	February 25th, 2025
Days on Market	182
Zoning	I-R

### **Listing Details**

Listing Office	Grand Realty
----------------	--------------

Data is supplied by Pillar 9â„¢ MLSÂ® System. Pillar 9â„¢ is the owner of the copyright in its MLSÂ® System. Data is deemed reliable but is not guaranteed accurate by Pillar 9â„¢. The trademarks MLSÂ®, Multiple Listing ServiceÂ® and the associated logos are owned by The Canadian Real Estate Association (CREA) and identify the quality of services provided by real estate professionals who are members of CREA. Used under license.