

# \$28 - 1, 38 Griffin Industrial Point E, Cochrane

MLS® #A2196938

**\$28**

0 Bedroom, 0.00 Bathroom,  
Commercial on 0.00 Acres

Industrial., Cochrane, Alberta

Prime Commercial Space for Lease â€” 1,835 sq. ft. | Brand New & Move-In Ready! It will be move-in ready on July 1, Looking for the perfect location for your professional business? This brand-new 1,835 sq. ft. commercial space is now available for lease in a highly desirable area. Ideal for professional service companies, insurance agencies, financial firms, and more, this main-floor office is designed to impress! Property Highlights:

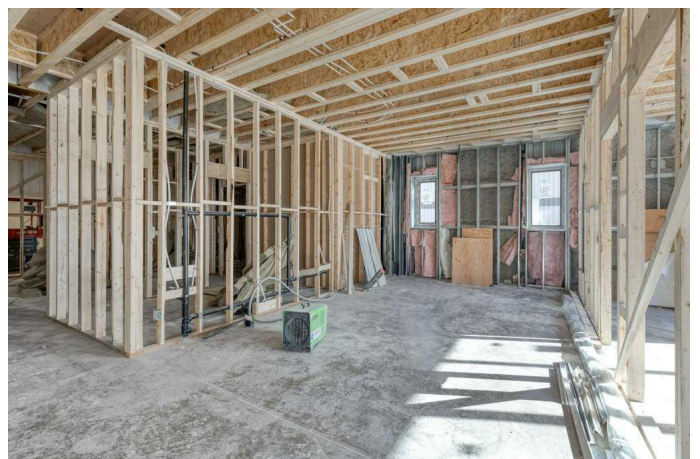
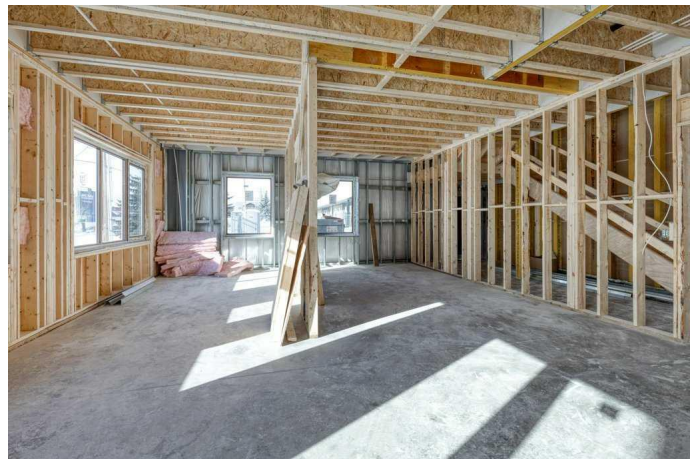
- ? Five Private Offices â€” Spacious and well-lit
- ? Lunchroom/Kitchen â€” Convenient for employees
- ? Main Floor Access â€” Easy entry for clients and staff
- ? Ample Parking â€” Plenty of spots for employees and visitors
- ? Modern Finishes â€” Professionally designed for a clean, professional look
- ? Excellent Location â€” High visibility and accessibility

Donâ€™t miss this opportunity to establish your business in a premium setting

Built in 2005

## Essential Information

MLS® #	A2196938
Price	\$28
Bathrooms	0.00
Acres	0.00
Year Built	2005



Type	Commercial
Sub-Type	Office
Status	Active

### Community Information

Address	1, 38 Griffin Industrial Point E
Subdivision	Industrial.
City	Cochrane
County	Rocky View County
Province	Alberta
Postal Code	T4C0A3

### Exterior

Foundation	Poured Concrete
------------	-----------------

### Additional Information

Date Listed	February 26th, 2025
Days on Market	178
Zoning	I-G

### Listing Details

Listing Office	CIR Realty
----------------	------------

Data is supplied by Pillar 9â„¢ MLSÂ® System. Pillar 9â„¢ is the owner of the copyright in its MLSÂ® System. Data is deemed reliable but is not guaranteed accurate by Pillar 9â„¢. The trademarks MLSÂ®, Multiple Listing ServiceÂ® and the associated logos are owned by The Canadian Real Estate Association (CREA) and identify the quality of services provided by real estate professionals who are members of CREA. Used under license.