

# \$1,090,000 - 111 Gas Station Avenue, Ponoka

---

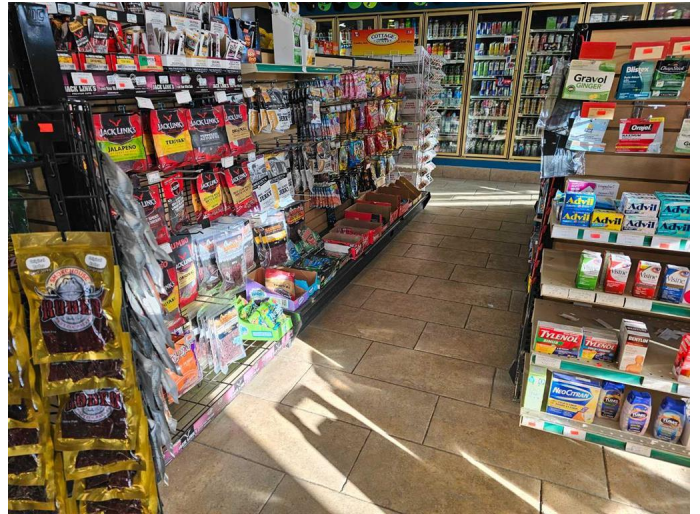
MLS® #A2197440

**\$1,090,000**

0 Bedroom, 0.00 Bathroom,  
Commercial on 0.00 Acres

Northwest Industrial Park, Ponoka, Alberta

This brand name gas station and a convenience store is located just an hour from the city of Edmonton. The property is in a mint condition, it generates a stable income and presents with well maintained condition . Excellent exposure and easy operation. This business is well known from the locals and busy with an extra income, too.



Built in 2000

## Essential Information

|            |             |
|------------|-------------|
| MLS® #     | A2197440    |
| Price      | \$1,090,000 |
| Bathrooms  | 0.00        |
| Acres      | 0.00        |
| Year Built | 2000        |
| Type       | Commercial  |
| Sub-Type   | Retail      |
| Status     | Active      |

## Community Information

|             |                           |
|-------------|---------------------------|
| Address     | 111 Gas Station Avenue    |
| Subdivision | Northwest Industrial Park |
| City        | Ponoka                    |
| County      | Ponoka County             |
| Province    | Alberta                   |
| Postal Code | T4J 1H7                   |

## Additional Information

|                |                     |
|----------------|---------------------|
| Date Listed    | February 27th, 2025 |
| Days on Market | 175                 |
| Zoning         | C-2                 |

### **Listing Details**

|                |                        |
|----------------|------------------------|
| Listing Office | MaxWell Capital Realty |
|----------------|------------------------|

Data is supplied by Pillar 9â„¢ MLSÂ® System. Pillar 9â„¢ is the owner of the copyright in its MLSÂ® System. Data is deemed reliable but is not guaranteed accurate by Pillar 9â„¢. The trademarks MLSÂ®, Multiple Listing ServiceÂ® and the associated logos are owned by The Canadian Real Estate Association (CREA) and identify the quality of services provided by real estate professionals who are members of CREA. Used under license.