

# \$245,000 - 1p, 515 6 Street S, Lethbridge

MLS® #A2200095

**\$245,000**

2 Bedroom, 2.00 Bathroom, 1,422 sqft

Residential on 0.00 Acres

Downtown, Lethbridge, Alberta

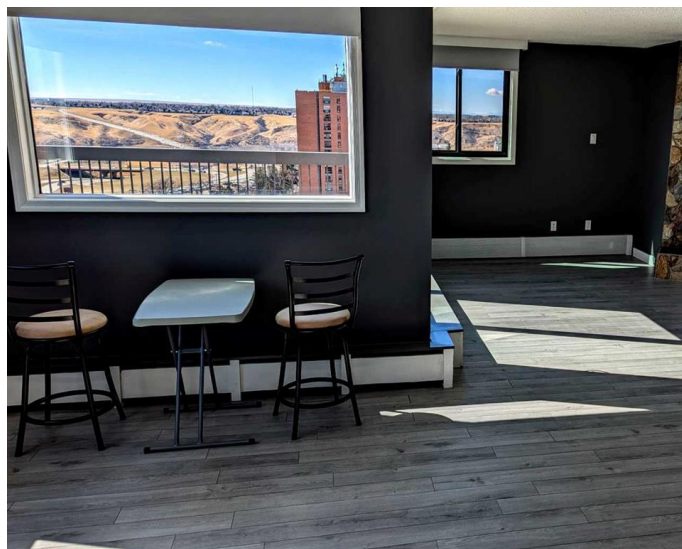
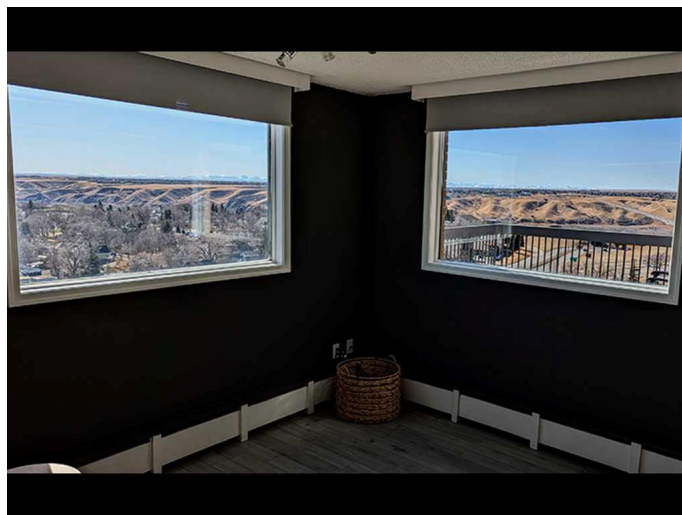
Discover vibrant downtown penthouse living in one of only four exclusive top-floor suites, offering over 1400 sqft of elegantly renovated space with breathtaking city, mountain, and coulee views—including the iconic High Level Bridge. This coveted SW corner unit boasts one of the highest balconies in the city, complete with a gas line for effortless BBQ gatherings. Inside, a spacious, light-filled interior features an updated kitchen, a brand-new gas fireplace, and a luxurious master bedroom with a large walk-in closet and an ensuite complete with a jetted tub. Enjoy the convenience of in-suite laundry—available exclusively in the penthouses—and two secured, covered parking stalls with direct elevator access right outside your door. Located within walking distance of the best restaurants, retail shops, Festival Square events, and key cultural spots like the downtown library, Yates Theatre, and live music venues, vibrant downtown living has never been more accessible. The building has recently undergone major mechanical upgrades, including upgraded boilers and AC chiller units, new elevators, and security enhancements completed in 2024, which add exceptional value and peace of mind.

Built in 1980

## Essential Information

MLS® #

A2200095



Price	\$245,000
Bedrooms	2
Bathrooms	2.00
Full Baths	2
Square Footage	1,422
Acres	0.00
Year Built	1980
Type	Residential
Sub-Type	Apartment
Style	Penthouse
Status	Active

### Community Information

Address	1p, 515 6 Street S
Subdivision	Downtown
City	Lethbridge
County	Lethbridge
Province	Alberta
Postal Code	T1J 4J1

### Amenities

Amenities	Bicycle Storage, Coin Laundry, Elevator(s), Fitness Center, Recreation Room, Sauna, Storage, Trash, Secured Parking
Parking Spaces	2
Parking	Assigned, Parkade

### Interior

Interior Features	Double Vanity, Storage
Appliances	Dishwasher, Electric Stove, Microwave, Refrigerator, Washer/Dryer
Heating	Natural Gas, Radiant
Cooling	Central Air
Fireplace	Yes
# of Fireplaces	1
Fireplaces	Gas
# of Stories	14

### Exterior

Exterior Features	BBQ gas line
Construction	Brick, Concrete

## Additional Information

Date Listed	March 7th, 2025
Days on Market	97
Zoning	C-D

## Listing Details

Listing Office	SUTTON GROUP - LETHBRIDGE
----------------	---------------------------

Data is supplied by Pillar 9â„¢ MLS® System. Pillar 9â„¢ is the owner of the copyright in its MLS® System. Data is deemed reliable but is not guaranteed accurate by Pillar 9â„¢. The trademarks MLS®, Multiple Listing Service® and the associated logos are owned by The Canadian Real Estate Association (CREA) and identify the quality of services provided by real estate professionals who are members of CREA. Used under license.