

\$153,000 - 3102, 7201 Poplar Drive, Grande Prairie

MLS® #A2204546

\$153,000

2 Bedroom, 1.00 Bathroom, 915 sqft

Residential on 0.00 Acres

South Patterson Place, Grande Prairie, Alberta

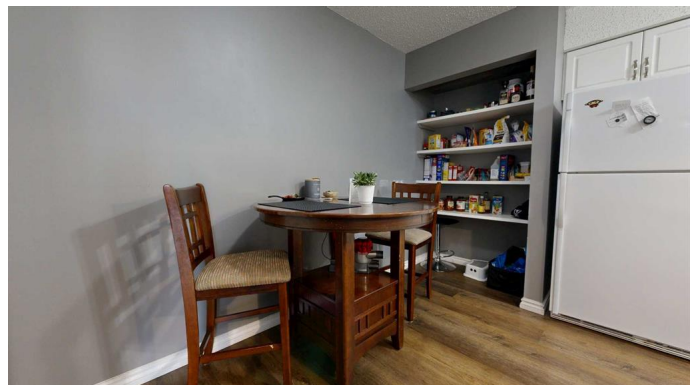
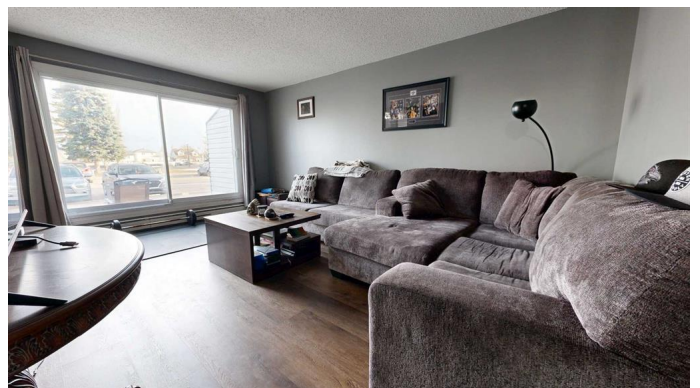
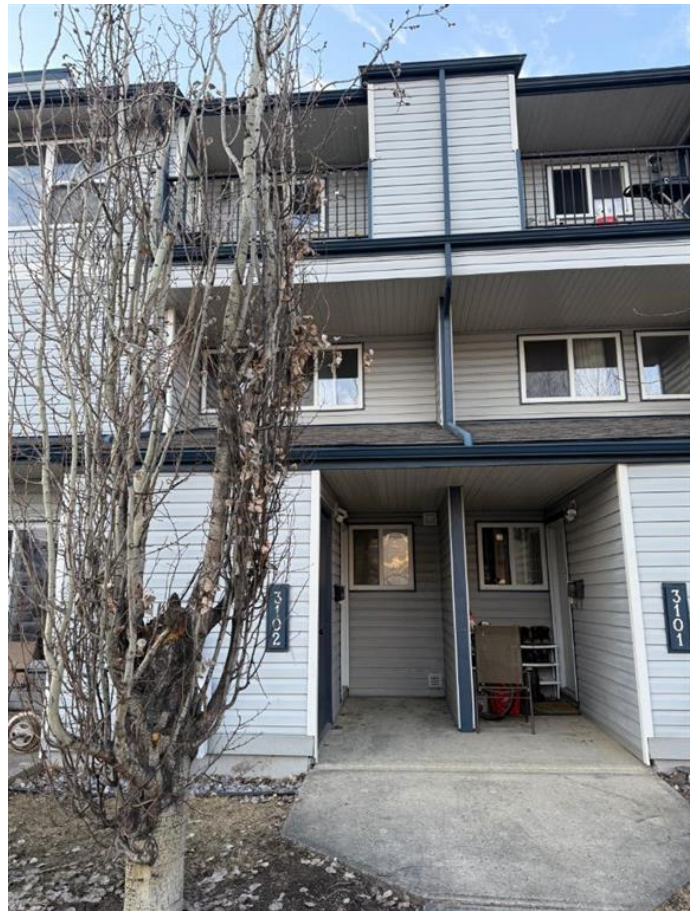
Welcome to Haywood Court! This charming and affordable 2-bedroom, 1-bathroom condo offers a low-maintenance lifestyle in a quiet, well-managed complex. Whether you're a first-time buyer, investor, or someone looking to downsize, this home checks all the boxes. Enjoy an open-concept living and dining area, functional kitchen layout, and two comfortable bedrooms with great closet space. The unit also features in-suite laundry, a private patio, and designated parking. Located close to parks, schools, shopping, and public transit, this condo combines comfort and convenience at an unbeatable price!

Built in 1981

Essential Information

MLS® #	A2204546
Price	\$153,000
Bedrooms	2
Bathrooms	1.00
Full Baths	1
Square Footage	915
Acres	0.00
Year Built	1981
Type	Residential
Sub-Type	Apartment
Style	Multi Level Unit
Status	Active

Community Information



Address	3102, 7201 Poplar Drive
Subdivision	South Patterson Place
City	Grande Prairie
County	Grande Prairie
Province	Alberta
Postal Code	T8V 6C5

Amenities

Amenities	Parking, Storage, Trash, Visitor Parking, Laundry
Parking Spaces	1
Parking	Stall

Interior

Interior Features	No Animal Home, No Smoking Home
Appliances	Dishwasher, Electric Oven, Refrigerator, Washer/Dryer
Heating	Boiler
Cooling	None
# of Stories	2

Exterior

Exterior Features	Private Entrance
Construction	Concrete

Additional Information

Date Listed	April 8th, 2025
Days on Market	24
Zoning	RM

Listing Details

Listing Office	eXp Realty
----------------	------------

Data is supplied by Pillar 9â„¢ MLSÂ® System. Pillar 9â„¢ is the owner of the copyright in its MLSÂ® System. Data is deemed reliable but is not guaranteed accurate by Pillar 9â„¢. The trademarks MLSÂ®, Multiple Listing ServiceÂ® and the associated logos are owned by The Canadian Real Estate Association (CREA) and identify the quality of services provided by real estate professionals who are members of CREA. Used under license.