

\$205,000 - 24 Canyon Creek Drive Sw, Medicine Hat

MLS® #A2209633

\$205,000

0 Bedroom, 0.00 Bathroom,

Land on 0.44 Acres

Canyon Creek, Medicine Hat, Alberta

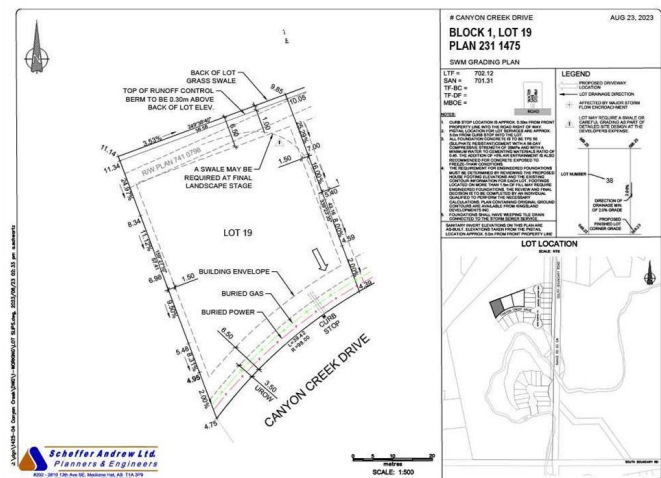
Welcome to your perfect canvas in Canyon Creek! These ready-to-build residential lots offer up to half an acre of prime real estate, nestled in a serene and picturesque neighborhood. Imagine waking up to the tranquility of beautiful surroundings, with a stunning prairie backdrop that offers a sense of openness. The peaceful ambiance of Canyon Creek is ideal for your dream home, whether you envision a cozy retreat or an expansive estate. With ample space to create the home you've always desired, these lots provide the perfect opportunity to blend modern living with nature's charm. Embrace the potential of this exceptional property and turn your dream into reality in one of the area's most desirable locations.

Essential Information

| | |
|-----------|------------------|
| MLS® # | A2209633 |
| Price | \$205,000 |
| Bathrooms | 0.00 |
| Acres | 0.44 |
| Type | Land |
| Sub-Type | Residential Land |
| Status | Active |

Community Information

| | |
|-------------|--------------------------|
| Address | 24 Canyon Creek Drive Sw |
| Subdivision | Canyon Creek |



| | |
|-------------|--------------|
| City | Medicine Hat |
| County | Medicine Hat |
| Province | Alberta |
| Postal Code | T1B 0B2 |

Additional Information

| | |
|----------------|-----------------|
| Date Listed | April 8th, 2025 |
| Days on Market | 135 |
| Zoning | R-LD |

Listing Details

| | |
|----------------|------------|
| Listing Office | EXP REALTY |
|----------------|------------|

Data is supplied by Pillar 9â„¢ MLS® System. Pillar 9â„¢ is the owner of the copyright in its MLS® System. Data is deemed reliable but is not guaranteed accurate by Pillar 9â„¢. The trademarks MLS®, Multiple Listing Service® and the associated logos are owned by The Canadian Real Estate Association (CREA) and identify the quality of services provided by real estate professionals who are members of CREA. Used under license.