

# \$674,900 - 656 Malvern Drive Ne, Calgary

MLS® #A2209939

**\$674,900**

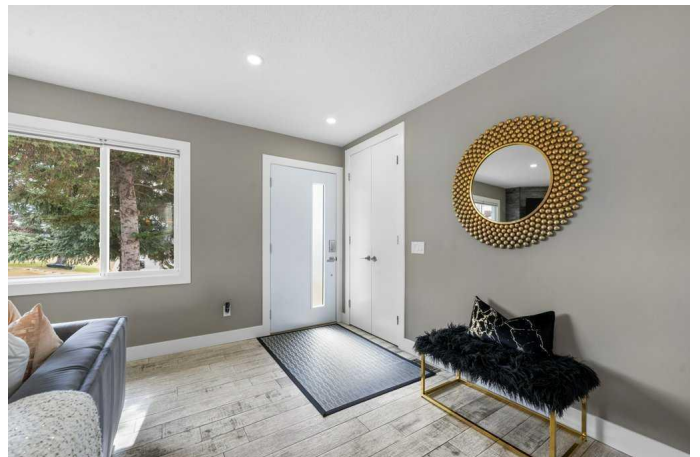
5 Bedroom, 3.00 Bathroom, 1,159 sqft  
Residential on 0.13 Acres

Marlborough Park, Calgary, Alberta

Welcome to this stunningly updated home nestled in the fantastic community of Marlborough Park. Situated on a quiet street and just minutes from major amenities—including transit, shopping, parks, schools, playgrounds, bike paths, and the hospital—this property offers both convenience and charm for families and investors alike.

Step inside to discover a modern open-concept main floor, thoughtfully renovated with elegant tile flooring, stylish lighting, and a warm wood-burning fireplace with a striking stone mantle. The spacious living and dining areas flow seamlessly into the designer kitchen, which boasts quartz countertops, stainless steel appliances, and a large central island perfect for entertaining. The main level features three generous bedrooms, including a primary suite with a private 2-piece ensuite. A beautifully updated 4-piece bathroom completes this level. The fully finished (illegal) basement suite has also been professionally remodeled and offers excellent flexibility for extended family or potential rental income. It includes a welcoming common area, ideal for a gym space or added storage, as well as a shared laundry room. The suite features its own open-concept living area, a sleek kitchen with island, two additional bedrooms, and a full 4-piece bathroom.

Outside, enjoy your expansive private backyard complete with a large patio—perfect



for relaxing or entertaining. The property also boasts a massive 25.3â€™™ x 25.4â€™™ heated garage, offering plenty of space for vehicles, storage, or a workshop. Additional highlights include hardwired CAT5 security camera wiring throughout, adding peace of mind and value. This is a move-in ready home with income potential in a family-friendly neighborhoodâ€”donâ€™™t miss your opportunity to own a truly exceptional property in Marlborough Park!

Built in 1978

**Essential Information**

|                |             |
|----------------|-------------|
| MLS® #         | A2209939    |
| Price          | \$674,900   |
| Bedrooms       | 5           |
| Bathrooms      | 3.00        |
| Full Baths     | 2           |
| Half Baths     | 1           |
| Square Footage | 1,159       |
| Acres          | 0.13        |
| Year Built     | 1978        |
| Type           | Residential |
| Sub-Type       | Detached    |
| Style          | Bungalow    |
| Status         | Active      |

**Community Information**

|             |                      |
|-------------|----------------------|
| Address     | 656 Malvern Drive Ne |
| Subdivision | Marlborough Park     |
| City        | Calgary              |
| County      | Calgary              |
| Province    | Alberta              |
| Postal Code | T2A 5P5              |

**Amenities**

|                |   |
|----------------|---|
| Parking Spaces | 4 |
|----------------|---|

|              |   |
|--------------|---|
| Parking      | 220 Volt Wiring, Double Garage Detached, Garage Faces Rear, Heated Garage, Insulated, Oversized |
| # of Garages | 2   |

## Interior

|                   |  |
|-------------------|--|
| Interior Features | Kitchen Island, No Smoking Home, Open Floorplan, Quartz Counters, Separate Entrance, Vinyl Windows       |
| Appliances        | Dishwasher, Dryer, Electric Range, Garage Control(s), Range Hood, Refrigerator, Washer, Window Coverings |
| Heating           | Forced Air, Natural Gas  |
| Cooling           | None   |
| Fireplace         | Yes  |
| # of Fireplaces   | 1  |
| Fireplaces        | Living Room, Mantle, Stone, Wood Burning   |
| Has Basement      | Yes  |
| Basement          | Exterior Entry, Finished, Full, Suite  |

## Exterior

|                   |  |
|-------------------|--|
| Exterior Features | Private Entrance, Private Yard                         |
| Lot Description   | Back Lane, Back Yard, Front Yard, Lawn, Pie Shaped Lot |
| Roof              | Asphalt Shingle  |
| Construction      | Metal Siding, Wood Frame                               |
| Foundation        | Poured Concrete  |

## Additional Information

|                |                  |
|----------------|------------------|
| Date Listed    | April 11th, 2025 |
| Days on Market | 34               |
| Zoning         | R-CG             |

## Listing Details

|                |            |
|----------------|------------|
| Listing Office | eXp Realty |
|----------------|------------|

Data is supplied by Pillar 9â„¢ MLS® System. Pillar 9â„¢ is the owner of the copyright in its MLS® System. Data is deemed reliable but is not guaranteed accurate by Pillar 9â„¢. The trademarks MLS®, Multiple Listing Service® and the associated logos are owned by The Canadian Real Estate Association (CREA) and identify the quality of services provided by real estate professionals who are members of CREA. Used under license.