

# \$172,000 - 439 1 Street Se, Empress

MLS® #A2210985

**\$172,000**

6 Bedroom, 3.00 Bathroom, 1,050 sqft

Residential on 0.30 Acres

NONE, Empress, Alberta

If your family is growing or you simply need more space, this beautifully updated home is the perfect fit! With 6 bedrooms, there's plenty of room for kids, guests, home offices, or hobby spaces—whatever your family needs, this home can accommodate it.

Upstairs features a bright, spacious living room, while downstairs offers a large family room—ideal for movie nights, play areas, or a cozy retreat. Freshly updated with all new flooring and paint throughout, this home is move-in ready and full of warmth.

Sitting on 4 expansive lots, the outdoor space is a dream! There's ample room to garden, build a garage or shop, and still have space for kids to run and play.

Whether you're settling in for the long haul or looking for a smart revenue property, this home offers incredible value and flexibility.

Don't miss your chance—call today to book a private tour!

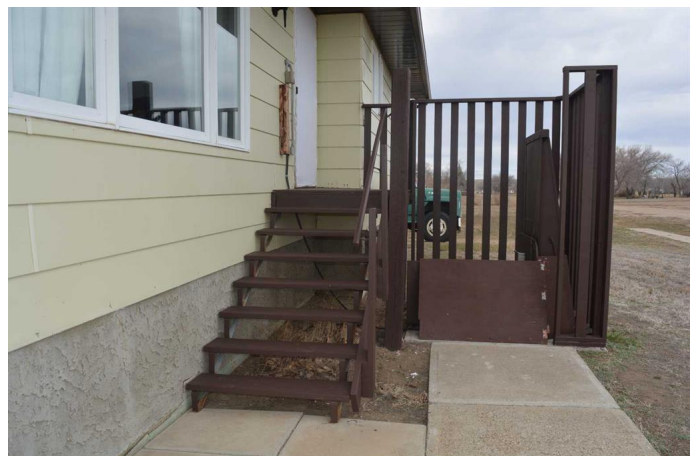
Built in 1983

## Essential Information

MLS® # A2210985

Price \$172,000

Bedrooms 6



|                |             |
|----------------|-------------|
| Bathrooms      | 3.00        |
| Full Baths     | 2           |
| Half Baths     | 1           |
| Square Footage | 1,050       |
| Acres          | 0.30        |
| Year Built     | 1983        |
| Type           | Residential |
| Sub-Type       | Detached    |
| Style          | Bi-Level    |
| Status         | Active      |

### **Community Information**

|             |                 |
|-------------|-----------------|
| Address     | 439 1 Street Se |
| Subdivision | NONE            |
| City        | Empress         |
| County      | Special Area 2  |
| Province    | Alberta         |
| Postal Code | T0J 1E0         |

### **Amenities**

|                |                               |
|----------------|-------------------------------|
| Parking Spaces | 3                             |
| Parking        | Off Street, RV Access/Parking |

### **Interior**

|                   |  |
|-------------------|--|
| Interior Features | Laminate Counters, Vinyl Windows                     |
| Appliances        | Refrigerator, Stove(s), Washer/Dryer, Water Softener |
| Heating           | Forced Air   |
| Cooling           | Central Air  |
| Has Basement      | Yes  |
| Basement          | Finished, Full                                       |

### **Exterior**

|                   |                                     |
|-------------------|-------------------------------------|
| Exterior Features | Other                               |
| Lot Description   | Back Lane, Level, Square Shaped Lot |
| Roof              | Asphalt                             |
| Construction      | Wood Frame                          |
| Foundation        | Wood                                |

### **Additional Information**

|                |                  |
|----------------|------------------|
| Date Listed    | April 11th, 2025 |
| Days on Market | 21               |
| Zoning         | Res              |

## **Listing Details**

|                |                               |
|----------------|-------------------------------|
| Listing Office | ROYAL LEPAGE COMMUNITY REALTY |
|----------------|-------------------------------|

Data is supplied by Pillar 9â„¢ MLS® System. Pillar 9â„¢ is the owner of the copyright in its MLS® System. Data is deemed reliable but is not guaranteed accurate by Pillar 9â„¢. The trademarks MLS®, Multiple Listing Service® and the associated logos are owned by The Canadian Real Estate Association (CREA) and identify the quality of services provided by real estate professionals who are members of CREA. Used under license.