

\$379,900 - 9945 69 Avenue, Grande Prairie

MLS® #A2213239

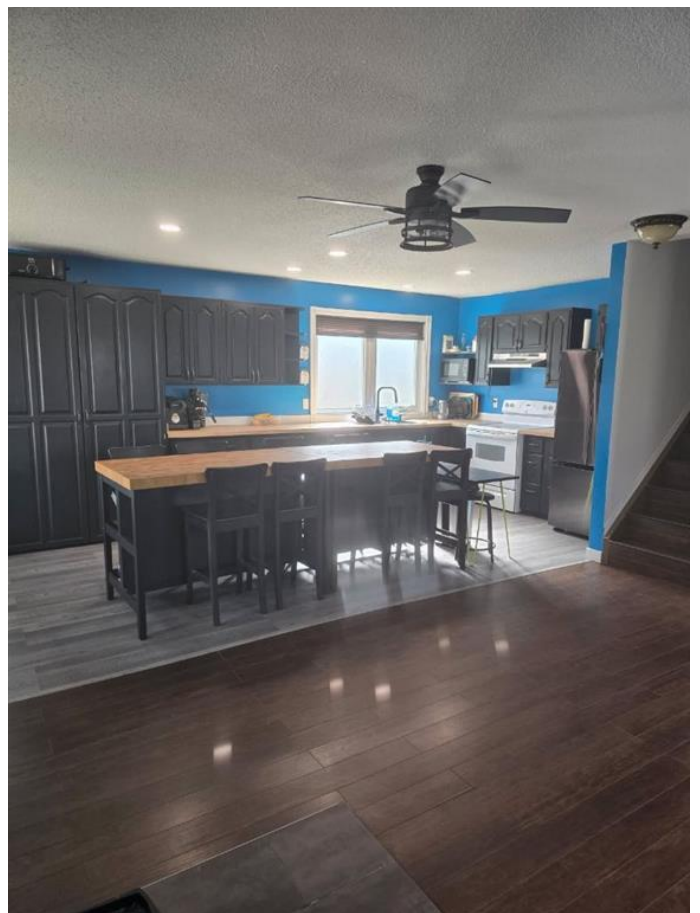
\$379,900

4 Bedroom, 3.00 Bathroom, 1,512 sqft

Residential on 0.20 Acres

South Patterson Place, Grande Prairie, Alberta

This incredibly spacious and extensively upgraded home is located in the peaceful and highly sought-after neighbourhood of South Patterson, right at the edge of the loop. From the moment you arrive, you'll appreciate the oversized driveway leading to a 24x30 insulated and boarded garage, along with RV parking and a beautifully landscaped pie-shaped lot surrounded by an 8'™ privacy fence. Step inside to a bright, open-concept main level that's been completely reimagined—engineer- and city-permitted renovations removed walls to create an expansive flow, and the kitchen has been moved to the left side, opening up the entire space. The result is a stunning great room featuring new kitchen flooring, black double sink, new countertops, Samsung fridge and dishwasher, and a Hamilton Beach microwave—all tied together by fresh 2024 paint throughout. The welcoming front entry includes tiled flooring and a double coat closet, while the large living room is filled with natural light from three tall windows. A generous dining area makes entertaining a breeze. Upstairs you'll find three well-sized bedrooms and a full bathroom, including a massive primary bedroom with its own two-piece ensuite, walk-in closet, and second closet. The third level offers a spacious rec room with patio doors, a full bathroom with laundry, and a fourth bedroom. The fourth level is fully developed with another large recreation space, an office, and potential for a



fifth bedroom thanks to a proper window. Storage is no issue, with ample space under the third level including a mechanical room, cold room, and electrical panel access. Additional upgrades include triple-pane windows (everywhere but the basement), 2023 furnace cold air intake, AC-ready furnace, upgraded attic insulation, spray foam in upper ceilings, and an upgraded electrical panel. Outside, enjoy your deck, hot tub with new panel, gazebo, mature trees, oversized shed, and quick access to the nearby parks and schools. As a bonus, an air hockey table is included in the sale. This is an amazing opportunity to own a well-maintained, thoughtfully renovated home in one of Grande Prairie’s most family-friendly communities.

Built in 1980

Essential Information

MLS® #	A2213239
Price	\$379,900
Bedrooms	4
Bathrooms	3.00
Full Baths	2
Half Baths	1
Square Footage	1,512
Acres	0.20
Year Built	1980
Type	Residential
Sub-Type	Detached
Style	4 Level Split
Status	Active

Community Information

Address	9945 69 Avenue
Subdivision	South Patterson Place
City	Grande Prairie
County	Grande Prairie

Province Alberta
Postal Code T8V 5G3

Amenities

Parking Spaces 6
Parking Double Garage Attached
of Garages 2

Interior

Interior Features Laminate Counters, Vaulted Ceilings
Appliances Dishwasher, Dryer, Electric Stove, Garage Control(s), Microwave, Range Hood, Refrigerator, Washer
Heating Forced Air
Cooling None
Has Basement Yes
Basement Finished, Full



Exterior

Exterior Features Other
Lot Description Landscaped, Lawn, No Neighbours Behind, Pie Shaped Lot, City Lot
Roof Asphalt Shingle
Construction Vinyl Siding, Wood Frame
Foundation Poured Concrete

Additional Information

Date Listed April 18th, 2025
Days on Market 29
Zoning RS

Listing Details

Listing Office RE/MAX Grande Prairie

Data is supplied by Pillar 9â„¢ MLSÂ® System. Pillar 9â„¢ is the owner of the copyright in its MLSÂ® System. Data is deemed reliable but is not guaranteed accurate by Pillar 9â„¢. The trademarks MLSÂ®, Multiple Listing ServiceÂ® and the associated logos are owned by The Canadian Real Estate Association (CREA) and identify the quality of services provided by real estate professionals who are members of CREA. Used under license.