

\$269,000 - 3107 49 Avenue, Lloydminster

MLS® #A2214585

\$269,000

4 Bedroom, 2.00 Bathroom, 869 sqft

Residential on 0.17 Acres

Aurora, Lloydminster, Saskatchewan

If you're looking for a very well-maintained Saskatchewan side home in excellent condition look no further. This home has four bedrooms two bathrooms and a large well well-maintained, fully landscaped fenced yard. The location is good as you're close to shopping and schools and there's a park just around the corner. This home is perfect for your family - don't miss out! Check out the 3D virtual tour!

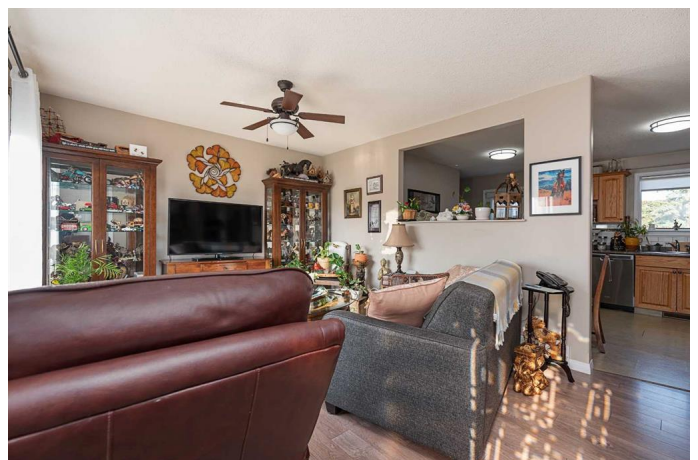
Built in 1974

Essential Information

MLS® #	A2214585
Price	\$269,000
Bedrooms	4
Bathrooms	2.00
Full Baths	1
Half Baths	1
Square Footage	869
Acres	0.17
Year Built	1974
Type	Residential
Sub-Type	Detached
Style	Bungalow
Status	Active

Community Information

Address 3107 49 Avenue



Subdivision	Aurora
City	Lloydminster
County	Lloydminster
Province	Saskatchewan
Postal Code	S9V 1C7

Amenities

Parking Spaces	2
Parking	Driveway, Off Street

Interior

Interior Features	Ceiling Fan(s), Laminate Counters, Storage
Appliances	Dishwasher, Range Hood, Refrigerator, Stove(s), Washer/Dryer, Window Coverings
Heating	Forced Air, Natural Gas, Floor Furnace
Cooling	None
Has Basement	Yes
Basement	Finished, Full

Exterior

Exterior Features	Storage
Lot Description	Back Yard, City Lot, Few Trees, Front Yard, Lawn, Private, Rectangular Lot
Roof	Asphalt Shingle
Construction	Concrete, Vinyl Siding, Wood Frame
Foundation	Poured Concrete

Additional Information

Date Listed	April 23rd, 2025
Days on Market	15
Zoning	R1

Listing Details

Listing Office	CENTURY 21 DRIVE
----------------	------------------

Data is supplied by Pillar 9â„¢ MLSÂ® System. Pillar 9â„¢ is the owner of the copyright in its MLSÂ® System. Data is deemed reliable but is not guaranteed accurate by Pillar 9â„¢. The trademarks MLSÂ®, Multiple Listing ServiceÂ® and the associated logos are owned by The Canadian Real Estate Association (CREA) and identify the quality of services provided by real estate professionals who are members of CREA. Used under license.