

# \$12 - 110, 333 6 Street S, Lethbridge

MLS® #A2219655

## \$12

0 Bedroom, 0.00 Bathroom,  
Commercial on 0.36 Acres

Downtown, Lethbridge, Alberta

Amazing opportunity to be part of downtown Lethbridge's most vibrant street. Close to Festival Square, shopping and restaurants. Vacant, wide open space ready for you to make your business dreams come true. This lease is for the NORTH half of the building, unit 105.

### Essential Information

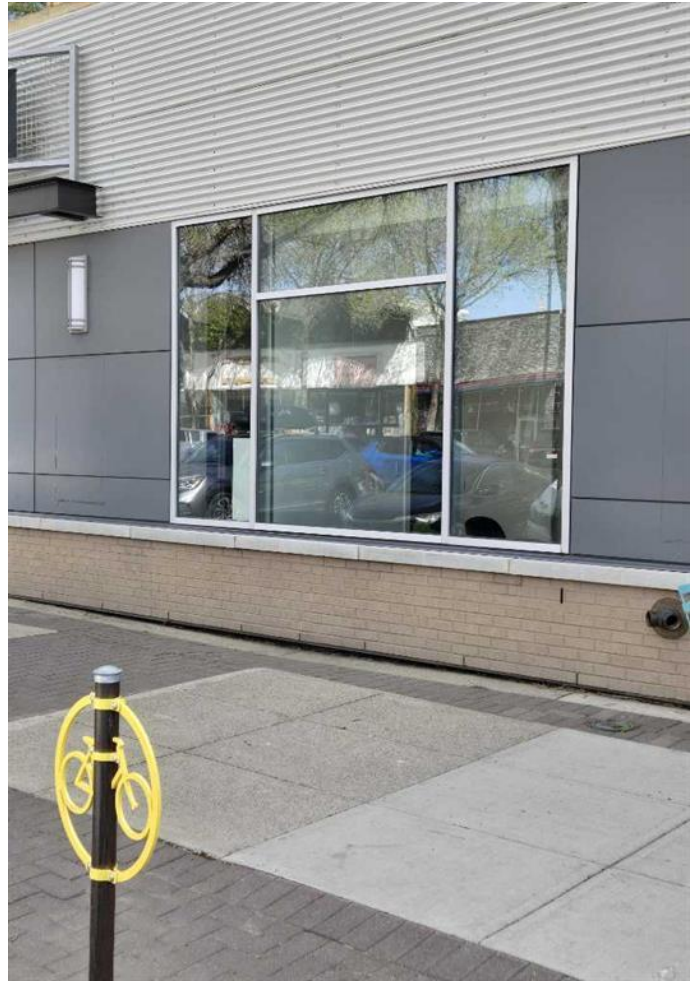
MLS® #	A2219655
Price	\$12
Bathrooms	0.00
Acres	0.36
Type	Commercial
Sub-Type	Retail
Status	Active

### Community Information

Address	110, 333 6 Street S
Subdivision	Downtown
City	Lethbridge
County	Lethbridge
Province	Alberta
Postal Code	T1J0N6

### Additional Information

Date Listed	May 9th, 2025
Days on Market	105
Zoning	C-D



Listing Details

Listing Office      Royal Lepage South Country - I



Data is supplied by Pillar 9â„¢ MLSÂ® System. Pillar 9â„¢ is the owner of the copyright in its MLSÂ® System. Data is deemed reliable but is not guaranteed accurate by Pillar 9â„¢. The trademarks MLSÂ®, Multiple Listing ServiceÂ® and the associated logos are owned by The Canadian Real Estate Association (CREA) and identify the quality of services provided by real estate professionals who are members of CREA. Used under license.

