

# \$364,500 - 7 Valleyview Drive Sw, Medicine Hat

MLS® #A2222531

## \$364,500

4 Bedroom, 2.00 Bathroom, 994 sqft

Residential on 0.19 Acres

SW Hill, Medicine Hat, Alberta

Beautiful home with an amazing back yard and deck. Spectacular view of the river valley. Total of 4 bedrooms with many upgrades throughout this fine home, including a new high efficient furnace, flooring and paint. Good sized single car garage and off street parking. You better take a look today.

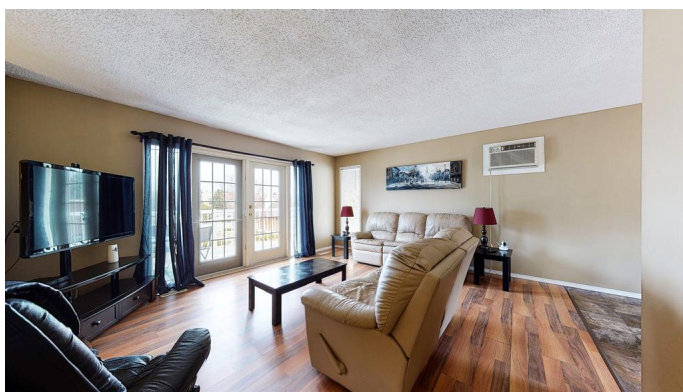
Built in 1973

## Essential Information

MLS® #	A2222531
Price	\$364,500
Bedrooms	4
Bathrooms	2.00
Full Baths	2
Square Footage	994
Acres	0.19
Year Built	1973
Type	Residential
Sub-Type	Detached
Style	Bi-Level
Status	Active

## Community Information

Address	7 Valleyview Drive Sw
Subdivision	SW Hill
City	Medicine Hat
County	Medicine Hat
Province	Alberta



Postal Code T1A 7K5

### Amenities

Utilities Electricity Connected, Natural Gas Connected, Garbage Collection, Sewer Connected, Water Connected

Parking Spaces 2

Parking Concrete Driveway, Driveway, Off Street, Single Garage Detached

# of Garages 1

### Interior

Interior Features Ceiling Fan(s), Laminate Counters, See Remarks

Appliances Dishwasher, Electric Stove, Refrigerator, Wall/Window Air Conditioner

Heating High Efficiency, Floor Furnace, Forced Air, Natural Gas

Cooling Wall/Window Unit(s)

Has Basement Yes

Basement Finished, Full

### Exterior

Exterior Features Private Yard

Lot Description Back Yard, Few Trees, Front Yard, Garden, Interior Lot, Landscaped, Lawn, Private, Rectangular Lot, Sloped Up, Street Lighting

Roof Asphalt Shingle

Construction Stucco, Vinyl Siding

Foundation Poured Concrete

### Additional Information

Date Listed May 19th, 2025

Days on Market 55

Zoning R-LD

### Listing Details

Listing Office ROYAL LEPAGE COMMUNITY REALTY

Data is supplied by Pillar 9â„¢ MLS® System. Pillar 9â„¢ is the owner of the copyright in its MLS® System. Data is deemed reliable but is not guaranteed accurate by Pillar 9â„¢. The trademarks MLS®, Multiple Listing Service® and the associated logos are owned by The Canadian Real Estate Association (CREA) and identify the quality of services provided by real estate professionals who are members of CREA. Used under license.