

\$325,000 - 5116 50 Avenue, Sylvan Lake

MLS® #A2222938

\$325,000

0 Bedroom, 0.00 Bathroom,
Land on 0.26 Acres

NONE, Sylvan Lake, Alberta

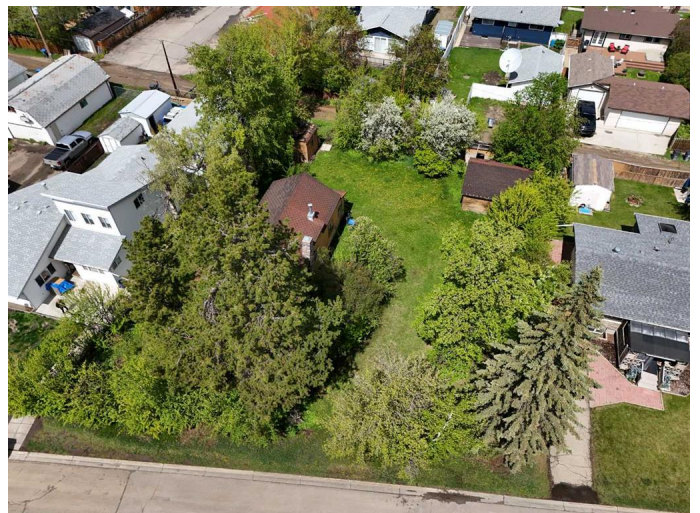
Situated just a few blocks from the stunning lakefront and the vibrant heart of downtown Sylvan Lake, this expansive 100' x 126' (11,450 sq ft) lot offers incredible potential. Zoned West Village Residential District, this rare parcel allows for a wide range of development options – ideal for constructing fourplexes, townhomes, stacked row houses, or even a boutique apartment building (up to 4 storeys, as per the Sylvan Lake Land Use Bylaws). With proximity to the lake, amenities, and recreational hotspots, this property is the perfect canvas for a signature residential development in one of Alberta's most desirable lake communities. Don't miss out on this prime investment opportunity – explore the potential today!

Essential Information

| | |
|-----------|------------------|
| MLS® # | A2222938 |
| Price | \$325,000 |
| Bathrooms | 0.00 |
| Acres | 0.26 |
| Type | Land |
| Sub-Type | Residential Land |
| Status | Active |

Community Information

| | |
|-------------|----------------|
| Address | 5116 50 Avenue |
| Subdivision | NONE |



| | |
|-------------|-----------------|
| City | Sylvan Lake |
| County | Red Deer County |
| Province | Alberta |
| Postal Code | T4S 1E6 |

Additional Information

| | |
|----------------|--------------------------|
| Date Listed | May 20th, 2025 |
| Days on Market | 55 |
| Zoning | WEST VILLAGE RESIDENTIAL |

Listing Details

| | |
|----------------|------------------------|
| Listing Office | Greater Property Group |
|----------------|------------------------|

Data is supplied by Pillar 9â„¢ MLS® System. Pillar 9â„¢ is the owner of the copyright in its MLS® System. Data is deemed reliable but is not guaranteed accurate by Pillar 9â„¢. The trademarks MLS®, Multiple Listing Service® and the associated logos are owned by The Canadian Real Estate Association (CREA) and identify the quality of services provided by real estate professionals who are members of CREA. Used under license.