

\$534,000 - 60 Terrace Close Ne, Medicine Hat

MLS® #A2225346

\$534,000

4 Bedroom, 2.00 Bathroom, 1,232 sqft

Residential on 0.13 Acres

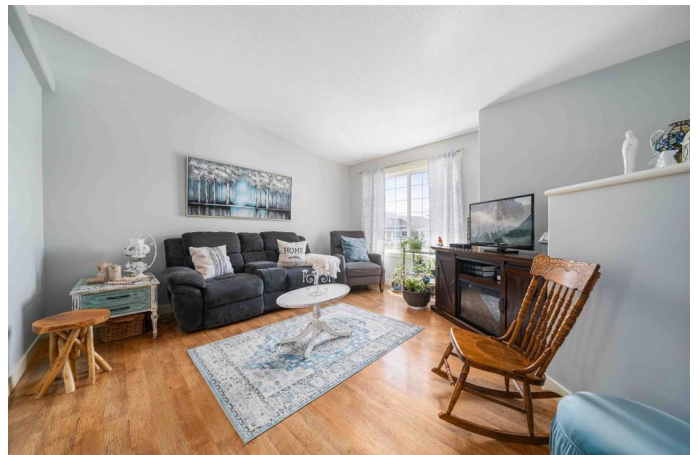
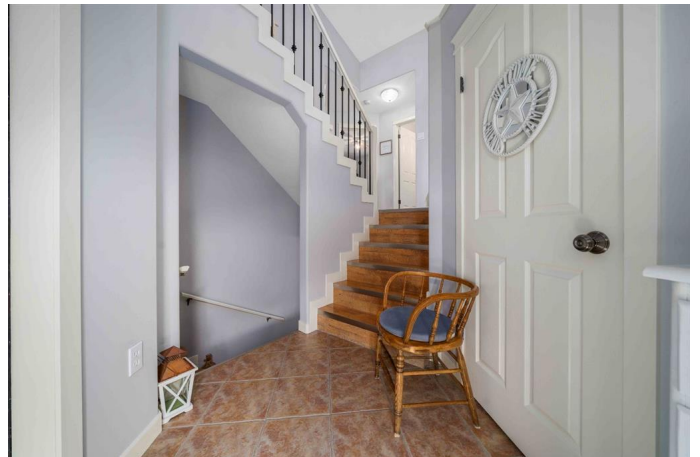
Terrace, Medicine Hat, Alberta

****Welcome to 60 Terrace Close â€“ Fantastic Family Home, Garage, 3 Car Carport !****
Ideally located just ****two blocks from Dr. Ken Sauer School and nearby playgrounds****, this exceptional property is perfect for families, professionals, and anyone seeking a well-rounded, move-in-ready home in a peaceful, community-oriented neighborhood. Step inside to discover a bright, open-concept kitchen made for entertaining, a beautifully finished basement ideal for family time or hosting guests, and abundant storage throughout. Every corner of this home has been thoughtfully designed with comfort and functionality in mind.

****Storage and parking are no issue here!****
You'll enjoy an ****attached double car garage****, PLUS a ****3-car carport with secure, lockable storage**** thatâ€™s easily accessible from the ****back alley**** â€“ an ideal setup for home-based businesses, hobbyists, or anyone needing quick, reliable access to tools, equipment, or toys.

Outside, the backyard is a true retreat featuring low-maintenance landscaping, a covered pergola, electric awning, and even a charming she-shed â€“ the perfect place to relax, create, or escape.

With its incredible curb appeal, modern interior, and bonus features that elevate everyday living, ****60 Terrace Close is a rare find**** in one of Medicine Hatâ€™s sought-after areas. ****Donâ€™t miss your chance to call this versatile and beautifully**



maintained property your next home.

Built in 2005

Essential Information

| | |
|----------------|-------------|
| MLS® # | A2225346 |
| Price | \$534,000 |
| Bedrooms | 4 |
| Bathrooms | 2.00 |
| Full Baths | 2 |
| Square Footage | 1,232 |
| Acres | 0.13 |
| Year Built | 2005 |
| Type | Residential |
| Sub-Type | Detached |
| Style | Bi-Level |
| Status | Active |

Community Information

| | |
|-------------|---------------------|
| Address | 60 Terrace Close Ne |
| Subdivision | Terrace |
| City | Medicine Hat |
| County | Medicine Hat |
| Province | Alberta |
| Postal Code | T1C2A8 |

Amenities

| | |
|----------------|---|
| Parking Spaces | 4 |
| Parking | Carport, Double Garage Attached, Off Street |
| # of Garages | 2 |

Interior

| | |
|-------------------|---|
| Interior Features | See Remarks, Walk-In Closet(s) |
| Appliances | Central Air Conditioner, Dishwasher, Electric Range, Microwave Hood Fan, Refrigerator, Washer/Dryer, Water Softener |
| Heating | Forced Air |
| Cooling | Central Air |
| Fireplace | Yes |
| # of Fireplaces | 2 |

| | |
|--------------|----------------|
| Fireplaces | Electric, Gas |
| Has Basement | Yes |
| Basement | Finished, Full |

Exterior

| | |
|-------------------|---|
| Exterior Features | Awning(s), BBQ gas line, Covered Courtyard, Storage |
| Lot Description | Back Lane, Cul-De-Sac |
| Roof | Asphalt Shingle |
| Construction | Brick, Vinyl Siding |
| Foundation | Poured Concrete |

Additional Information

| | |
|----------------|----------------|
| Date Listed | May 29th, 2025 |
| Days on Market | 24 |
| Zoning | R-LD |

Listing Details

| | |
|----------------|--------------------------|
| Listing Office | RIVER STREET REAL ESTATE |
|----------------|--------------------------|

Data is supplied by Pillar 9â„¢ MLS® System. Pillar 9â„¢ is the owner of the copyright in its MLS® System. Data is deemed reliable but is not guaranteed accurate by Pillar 9â„¢. The trademarks MLS®, Multiple Listing Service® and the associated logos are owned by The Canadian Real Estate Association (CREA) and identify the quality of services provided by real estate professionals who are members of CREA. Used under license.