

\$584,525 - 105 Mountain Avenus Crescent, Fort McMurray

MLS® #A2227858

\$584,525

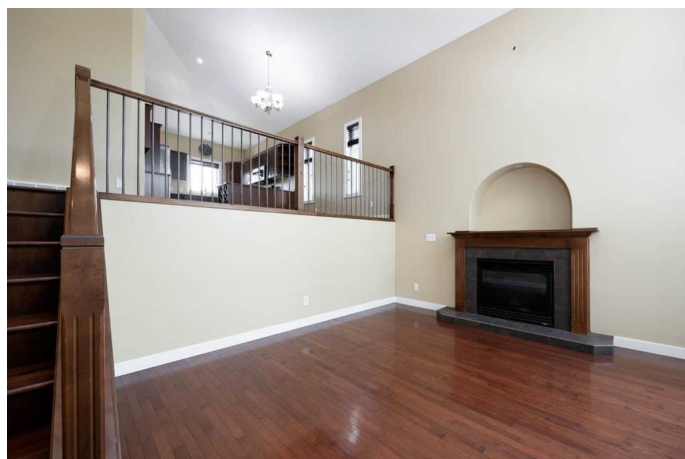
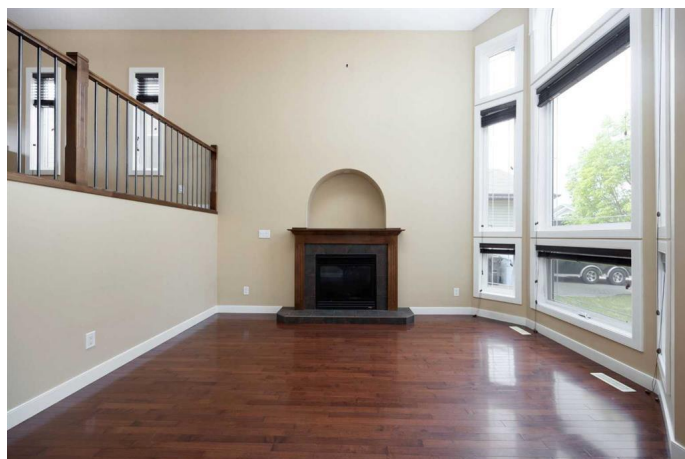
5 Bedroom, 3.00 Bathroom, 1,782 sqft
Residential on 0.11 Acres

Timberlea, Fort McMurray, Alberta

BEAUTIFUL 5-BEDROOM HOME (4 UPSTAIRS) IN TIMBERLEA. With over 1,760 sqft of living space, this modified bi-level home offers open concept living on the main floor with 3 full bathrooms, a fully finished basement and double attached, heated garage. The kitchen has a traditional feel with dark wood cabinetry, SS appliances, pantry, breakfast bar and generous counter space. Off of the kitchen is a laundry room with access to the rear deck. Completing this level are 3 good sized bedrooms and a full bathroom. The upper level is home to a large master bedroom oasis with vaulted ceilings, walk-in closet and spacious ensuite bathroom with jetted tub and stand up shower. The finished basement with separate entrance has a family room with wet bar, full bathroom, spacious bedroom, storage space and utility room. The backyard is fully fenced and landscaped with a gas hookup on the deck. The double attached & heated garage measures 20'x23'; driveway and walkways are exposed aggregate. Located only steps from a beautiful pond, this quiet street is close to schools, shopping, parks, trails and more! Be sure to schedule your private tour today!

Built in 2008

Essential Information



MLS® #	A2227858
Price	\$584,525
Bedrooms	5
Bathrooms	3.00
Full Baths	3
Square Footage	1,782
Acres	0.11
Year Built	2008
Type	Residential
Sub-Type	Detached
Style	Bi-Level
Status	Active

Community Information

Address	105 Mountain Avens Crescent
Subdivision	Timberlea
City	Fort McMurray
County	Wood Buffalo
Province	Alberta
Postal Code	T9K 0J5

Amenities

Parking Spaces	4
Parking	Double Garage Detached
# of Garages	2

Interior

Interior Features	Separate Entrance, Walk-In Closet(s)
Appliances	See Remarks
Heating	Central
Cooling	Other
Fireplace	Yes
# of Fireplaces	1
Fireplaces	Gas, Living Room
Has Basement	Yes
Basement	Exterior Entry, Finished, Full, Walk-Out

Exterior

Exterior Features	None
-------------------	------

Lot Description	Back Yard, Landscaped, Lawn, Level, Rectangular Lot
Roof	Asphalt Shingle
Construction	Mixed
Foundation	Poured Concrete

Additional Information

Date Listed	June 9th, 2025
Days on Market	15
Zoning	R1

Listing Details

Listing Office	EXP REALTY
----------------	------------

Data is supplied by Pillar 9â„¢ MLS® System. Pillar 9â„¢ is the owner of the copyright in its MLS® System. Data is deemed reliable but is not guaranteed accurate by Pillar 9â„¢. The trademarks MLS®, Multiple Listing Service® and the associated logos are owned by The Canadian Real Estate Association (CREA) and identify the quality of services provided by real estate professionals who are members of CREA. Used under license.