

\$519,000 - 201 Martinridge Crescent Ne, Calgary

MLS® #A2229816

\$519,000

3 Bedroom, 2.00 Bathroom, 892 sqft

Residential on 0.07 Acres

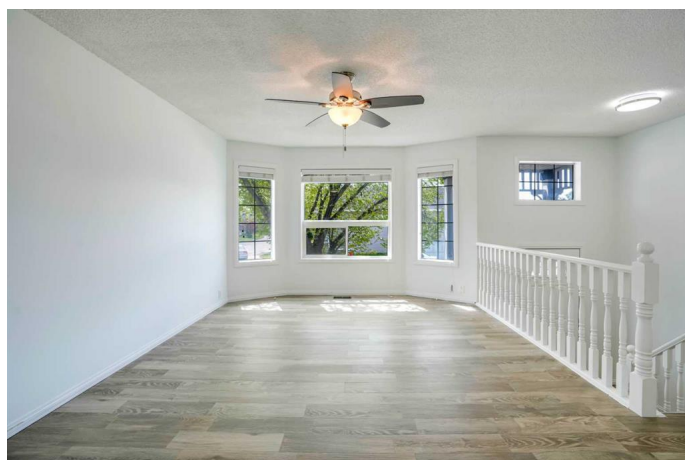
Martindale, Calgary, Alberta

WELCOME TO 201 MARTINRIDGE CRES NE
beautiful , freshly renovated bilevel house with
fully finished basement and double car garage.
this beautiful property is located on a very
desirable street only steps away from school
,park and play ground area and train station
and bus . fully renovated house with new
kitchen , bathrooms , floors , lighting fixtures ,
floors and fresh paint . the house looks very
charming and beautiful yet modern inside and
outside with beautiful stone work . BEAUTIFUL
HOUSE , DESIRABLE LOCATION CLOSE TO
SHOPPING , SCHOOLS AND GURDWARA
SAHIB , MUST BE SEEN AND
APPERCIATED

Built in 1993

Essential Information

MLS® #	A2229816
Price	\$519,000
Bedrooms	3
Bathrooms	2.00
Full Baths	2
Square Footage	892
Acres	0.07
Year Built	1993
Type	Residential
Sub-Type	Detached
Style	Bi-Level
Status	Active



Community Information

Address	201 Martinridge Crescent Ne
Subdivision	Martindale
City	Calgary
County	Calgary
Province	Alberta
Postal Code	T3J3M3

Amenities

Parking Spaces	2
Parking	Double Garage Detached
# of Garages	2

Interior

Interior Features	Pantry, Quartz Counters
Appliances	Dishwasher, Electric Stove, Refrigerator, Washer/Dryer
Heating	High Efficiency, Natural Gas
Cooling	None
Has Basement	Yes
Basement	Finished, Full

Exterior

Exterior Features	Private Yard
Lot Description	Back Lane, Back Yard, City Lot, Front Yard, Level
Roof	Asphalt Shingle
Construction	Concrete, Vinyl Siding
Foundation	Poured Concrete

Additional Information

Date Listed	June 10th, 2025
Days on Market	14
Zoning	RC-G

Listing Details

Listing Office	Royal LePage METRO
----------------	--------------------

Data is supplied by Pillar 9â„¢ MLS® System. Pillar 9â„¢ is the owner of the copyright in its MLS® System. Data is deemed reliable but is not guaranteed accurate by Pillar 9â„¢. The trademarks MLS®, Multiple Listing Service® and the associated logos are owned by The Canadian Real Estate Association (CREA) and identify the quality of services provided by real estate professionals who are members of CREA. Used under license.