

# \$504,900 - 603, 135 Belmont Passage Sw, Calgary

MLS® #A2229970

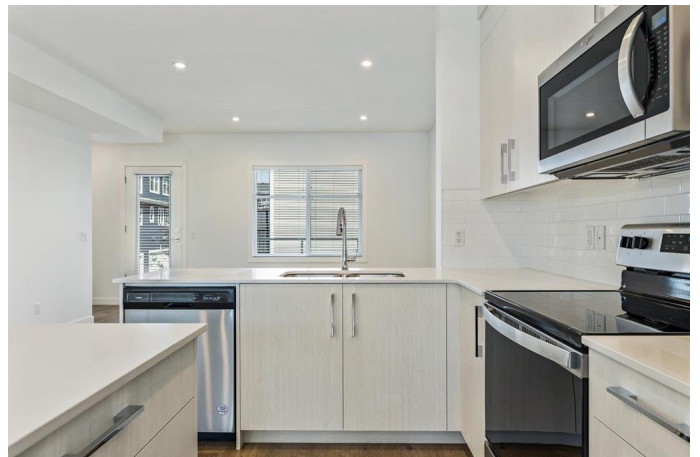
**\$504,900**

4 Bedroom, 3.00 Bathroom, 1,665 sqft

Residential on 0.00 Acres

Belmont, Calgary, Alberta

Briarfield, an exclusive collection of modern 4-bedroom townhomes located in the vibrant and fast-growing Belmont community in southwest Calgary. Designed for those who value elegance, comfort, and convenience, Briarfield offers a sophisticated lifestyle in a neighbourhood built for living well. Set in a dynamic and welcoming environment, Briarfield townhomes combine thoughtful design with everyday functionality. Belmont is a thriving new community ideally located near essential amenities, including scenic pathways, family-friendly playgrounds, shopping, dining, and more—making it the perfect setting for both families and professionals. These spacious homes are crafted with modern living in mind. With 4 generously sized bedrooms and 2.5 bathrooms, there's plenty of room for your family to grow, work, and thrive. Each unit includes an attached double heated garage, ensuring your vehicles and gear stay protected no matter the season. On the main floor, a versatile fourth bedroom adds flexibility—perfect for use as a home office, guest suite, or private retreat. Inside, you'll find high-end finishes throughout, including luxury vinyl plank flooring, soaring ceilings, and open-concept living spaces that feel bright and expansive. At the heart of the home, the chef-inspired kitchen is both stylish and functional. It features full-height cabinetry, soft-close drawers, stainless steel appliances, and Quartz countertops. A large pantry offers



extra storage, while the eat-up bar is ideal for casual meals, entertaining guests, or simply unwinding after a long day. Upstairs, the primary suite provides a peaceful escape, complete with a spacious walk-in closet and a spa-like 4-piece ensuite. Two additional bedrooms, a full main bathroom, and convenient upper-level laundry round out the upper floorâ€”ensuring comfort and convenience for the whole family. Briarfield isnâ€™t just a place to liveâ€”itâ€™s a lifestyle. With move-in ready homes and access to one of Calgaryâ€™s most exciting new communities, itâ€™s your opportunity to experience contemporary living without compromise. Live Better. Live Truman. \*Photo gallery of a similar unit.

Built in 2024

**Essential Information**

MLS® #	A2229970
Price	\$504,900
Bedrooms	4
Bathrooms	3.00
Full Baths	2
Half Baths	1
Square Footage	1,665
Acres	0.00
Year Built	2024
Type	Residential
Sub-Type	Row/Townhouse
Style	3 Storey
Status	Active

**Community Information**

Address	603, 135 Belmont Passage Sw
Subdivision	Belmont
City	Calgary
County	Calgary

Province	Alberta
Postal Code	T2X 4N4

### Amenities

Amenities	Visitor Parking, Park
Parking Spaces	2
Parking	Double Garage Attached
# of Garages	2

### Interior

Interior Features	Breakfast Bar, Quartz Counters
Appliances	Dishwasher, Electric Range, Microwave Hood Fan, Refrigerator, Window Coverings
Heating	Forced Air
Cooling	None
Basement	None

### Exterior

Exterior Features	Other
Lot Description	Back Lane
Roof	Asphalt Shingle
Construction	Vinyl Siding, Wood Frame
Foundation	Poured Concrete

### Additional Information

Date Listed	June 11th, 2025
Days on Market	72
Zoning	M-G

### Listing Details

Listing Office	RE/MAX First
----------------	--------------

Data is supplied by Pillar 9â„¢ MLS® System. Pillar 9â„¢ is the owner of the copyright in its MLS® System. Data is deemed reliable but is not guaranteed accurate by Pillar 9â„¢. The trademarks MLS®, Multiple Listing Service® and the associated logos are owned by The Canadian Real Estate Association (CREA) and identify the quality of services provided by real estate professionals who are members of CREA. Used under license.