

# \$535,000 - 88 Weddell Crescent, Red Deer

MLS® #A2230073

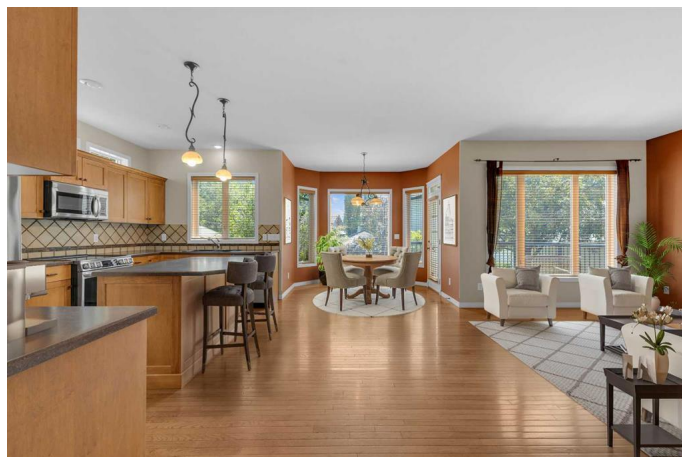
**\$535,000**

3 Bedroom, 3.00 Bathroom, 1,808 sqft

Residential on 0.15 Acres

Westlake, Red Deer, Alberta

This elegant two-storey home is set on an oversized lot in a sought-after crescent in the desirable Westlake neighbourhood. It boasts strong curb appeal with an extended covered front porch and dual garage doors. Inside, the entryway leads to a bright, open-concept kitchen, living, and dining area. The kitchen is equipped with ample cabinetry, a centre island, a pantry, and an upgraded stainless steel appliance package. The dining area is surrounded by windows that overlook the sunny south-facing backyard, while the living room features a stylish gas fireplace—creating a welcoming space for entertaining family or friends. A mudroom/laundry area and a two-piece bathroom complete the main level. Thin plank hardwood flooring flows through most of the main floor, up the stairs, and into the primary bedroom. Upstairs, the spacious primary suite includes a walk-in closet and a five-piece ensuite with dual sinks and a corner jetted tub. Two additional bedrooms and a four-piece bathroom round out the upper level. The basement is open for development and already includes operational in-floor heating. The hot water tank was replaced approximately three years ago. The heated front-attached garage includes a corner workbench for added functionality. The backyard features a deck, vinyl fencing, an included shed, mature trees and shrubs, and plenty of space for kids or pets to enjoy. Just steps from the scenic trails and amenities of



Heritage Ranch, and within walking distance to schools, playgrounds, and the Gary W. Harris Canada Games Centre, this home offers both comfort and convenience.

Built in 2004

**Essential Information**

MLS® #	A2230073
Price	\$535,000
Bedrooms	3
Bathrooms	3.00
Full Baths	2
Half Baths	1
Square Footage	1,808
Acres	0.15
Year Built	2004
Type	Residential
Sub-Type	Detached
Style	2 Storey
Status	Active

**Community Information**

Address	88 Weddell Crescent
Subdivision	Westlake
City	Red Deer
County	Red Deer
Province	Alberta
Postal Code	T4N 7E3

**Amenities**

Parking Spaces	4
Parking	Double Garage Attached, Heated Garage
# of Garages	2

**Interior**

Interior Features	Open Floorplan
Appliances	See Remarks
Heating	In Floor, Forced Air

Cooling	None
Fireplace	Yes
# of Fireplaces	1
Fireplaces	Gas, Living Room
Has Basement	Yes
Basement	Full, Unfinished

## Exterior

Exterior Features	Private Yard
Lot Description	Back Lane, Landscaped, Private
Roof	Asphalt Shingle
Construction	Vinyl Siding
Foundation	Poured Concrete

## Additional Information

Date Listed	June 10th, 2025
Days on Market	12
Zoning	R1

## Listing Details

Listing Office	Century 21 Maximum
----------------	--------------------

Data is supplied by Pillar 9â„¢ MLS® System. Pillar 9â„¢ is the owner of the copyright in its MLS® System. Data is deemed reliable but is not guaranteed accurate by Pillar 9â„¢. The trademarks MLS®, Multiple Listing Service® and the associated logos are owned by The Canadian Real Estate Association (CREA) and identify the quality of services provided by real estate professionals who are members of CREA. Used under license.