

\$429,900 - 14 Hallgren Drive, Sylvan Lake

MLS® #A2230468

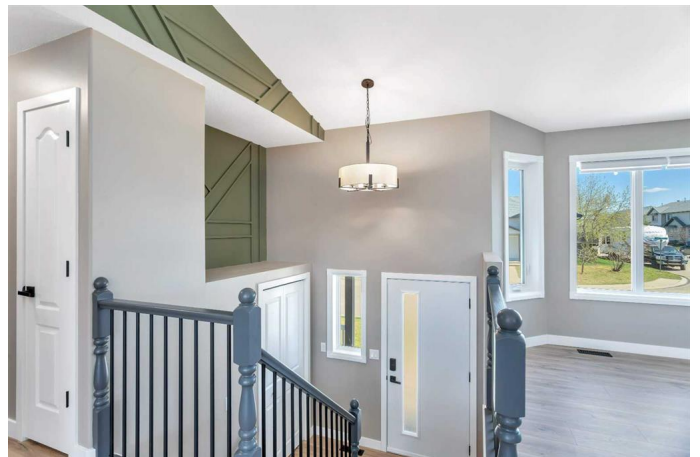
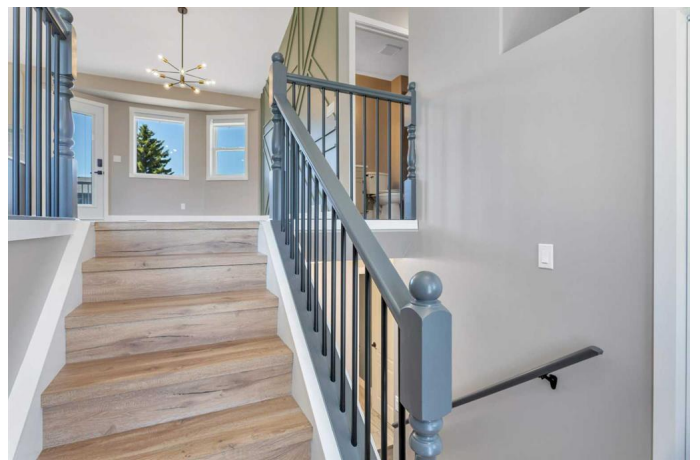
\$429,900

4 Bedroom, 3.00 Bathroom, 1,127 sqft

Residential on 0.13 Acres

Hewlett Park, Sylvan Lake, Alberta

This stunning, fully renovated 4-bedroom, 3-bathroom home is back on the market after the previous buyer was unable to close—giving you another chance to own this incredible property! Nestled on a wide 52'™ lot just steps from CP Blakely School, this transformation is nothing short of spectacular, starting with the newly reimagined main floor. The kitchen is a showstopper, complete with all-new cabinetry, quartz countertops, an undermount sink, and black stainless appliances. The open-concept layout flows beautifully into the living space, where a unique feature wall adds a bold touch of personality and style. The upgrades continue into all three bathrooms, now boasting new vanities with quartz counters, undermount sinks, contemporary tilework, and modern fixtures. The entire home features upgraded vinyl flooring, stylish new light fixtures, and has been freshly painted throughout in neutral tones. The primary suite includes custom walk-in closet organizers, offering smart and elegant storage. Downstairs, a 4th bedroom with a large walk-in closet has been added, along with rough-in plumbing for a future wet bar—perfect for entertaining. With its private rear entry, the basement offers convenient access from the future garage and backyard, enhancing everyday functionality. Major system upgrades include PEX plumbing (removed all Poly-B) and triple-pane windows (2022) for added energy efficiency and comfort. The oversized backyard offers ample



room to build a garage, set up a play area, or create your own outdoor oasis. Located near schools, parks, the beach, and more – this fully updated home blends modern design with an unbeatable location.

Built in 1996

Essential Information

MLS® #	A2230468
Price	\$429,900
Bedrooms	4
Bathrooms	3.00
Full Baths	3
Square Footage	1,127
Acres	0.13
Year Built	1996
Type	Residential
Sub-Type	Detached
Style	Bi-Level
Status	Active

Community Information

Address	14 Hallgren Drive
Subdivision	Hewlett Park
City	Sylvan Lake
County	Red Deer County
Province	Alberta
Postal Code	T4S 1T4

Amenities

Parking Spaces	2
Parking	Alley Access, Off Street, Parking Pad, RV Access/Parking, Outside

Interior

Interior Features	Granite Counters, Kitchen Island, No Smoking Home, Open Floorplan, Dry Bar
Appliances	See Remarks
Heating	Forced Air, Natural Gas

Cooling	None
Has Basement	Yes
Basement	Finished, Full

Exterior

Exterior Features	Fire Pit, Private Entrance, Private Yard
Lot Description	Back Lane, Back Yard, City Lot, Level
Roof	Asphalt Shingle
Construction	Vinyl Siding
Foundation	Poured Concrete

Additional Information

Date Listed	June 12th, 2025
Days on Market	5
Zoning	R1

Listing Details

Listing Office	Greater Property Group
----------------	------------------------

Data is supplied by Pillar 9â„¢ MLS® System. Pillar 9â„¢ is the owner of the copyright in its MLS® System. Data is deemed reliable but is not guaranteed accurate by Pillar 9â„¢. The trademarks MLS®, Multiple Listing Service® and the associated logos are owned by The Canadian Real Estate Association (CREA) and identify the quality of services provided by real estate professionals who are members of CREA. Used under license.