

\$179,900 - 46 5812 Street Nw, High Prairie

MLS® #A2236151

\$179,900

3 Bedroom, 2.00 Bathroom, 1,200 sqft
Residential on 0.13 Acres

NONE, High Prairie, Alberta

Family Home or Investment property available. This 3 Bedroom 16x76 Manufactured Home with a 14 x 24 addition is an affordable First Home. Numerous features include, vaulted ceiling, a built in island, pantry, china cupboard, main floor laundry, private master bedroom with ensuite, covered deck, and a fenced yard. All this and you will own the lot. The home in great condition and has a long term tenant. The property is close to the elementary school . Call for your private viewing!

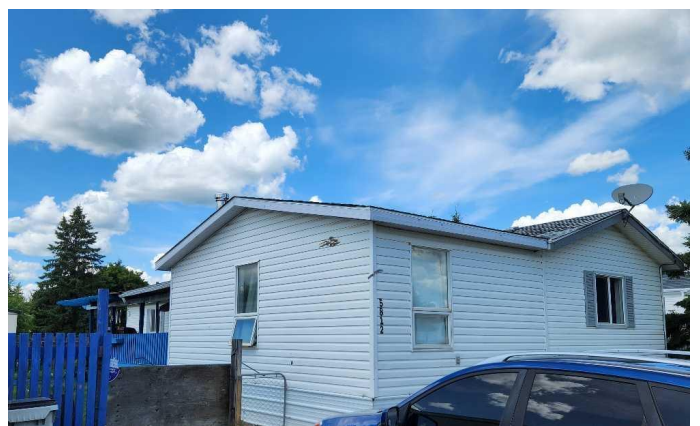
Built in 1999

Essential Information

MLS® #	A2236151
Price	\$179,900
Bedrooms	3
Bathrooms	2.00
Full Baths	2
Square Footage	1,200
Acres	0.13
Year Built	1999
Type	Residential
Sub-Type	Detached
Style	Modular Home
Status	Active

Community Information

Address 46 5812 Street Nw



Subdivision	NONE
City	High Prairie
County	Big Lakes County
Province	Alberta
Postal Code	T0G 1E0

Amenities

Parking Spaces	2
Parking	Off Street
# of Garages	2

Interior

Interior Features	Kitchen Island, Pantry
Appliances	Electric Stove
Heating	Forced Air, Natural Gas, Floor Furnace
Cooling	None
Basement	None

Exterior

Exterior Features	Private Yard
Lot Description	Landscaped, Standard Shaped Lot
Roof	Asphalt Shingle
Construction	Vinyl Siding
Foundation	Wood

Additional Information

Date Listed	July 2nd, 2025
Days on Market	102
Zoning	residential

Listing Details

Listing Office	Royal LePage P.V.R. Realty
----------------	----------------------------

Data is supplied by Pillar 9â„¢ MLSÂ® System. Pillar 9â„¢ is the owner of the copyright in its MLSÂ® System. Data is deemed reliable but is not guaranteed accurate by Pillar 9â„¢. The trademarks MLSÂ®, Multiple Listing ServiceÂ® and the associated logos are owned by The Canadian Real Estate Association (CREA) and identify the quality of services provided by real estate professionals who are members of CREA. Used under license.